

## Product datasheet for **TA332102**

### FKBP6 Rabbit Polyclonal Antibody

#### Product data:

Product Type:	Primary Antibodies
Applications:	IHC, WB
Recommended Dilution:	WB, IHC
Reactivity:	Human
Host:	Rabbit
Isotype:	IgG
Clonality:	Polyclonal
Immunogen:	The immunogen for Anti-MTA2 Antibody: synthetic peptide directed towards the C terminal of human MTA2. Synthetic peptide located within the following region: ALTHLEMRRRAARRPNLPLKVKPTLIAVRPPVPLPAPSHPASTNEPIVLED
Formulation:	Liquid. Purified antibody supplied in 1x PBS buffer with 0.09% (w/v) sodium azide and 2% sucrose. <i>Note that this product is shipped as lyophilized powder to China customers.</i>
Conjugation:	Unconjugated
Storage:	Store at -20°C as received.
Stability:	Stable for 12 months from date of receipt.
Predicted Protein Size:	36 kDa
Gene Name:	FK506 binding protein 6
Database Link:	<a href="#">NP_003593</a> <a href="#">Entrez Gene 8468 Human</a> <a href="#">O75344</a>
Background:	MTA2 modulates the enzymatic activity of the histone deacetylase core complex. The protein encoded by this gene is a member of the immunophilin protein family, which play a role in immunoregulation and basic cellular processes involving protein folding and trafficking. This encoded protein is a cis-trans prolyl isomerase that binds to the immunosuppressants FK506 and rapamycin. This gene is found to be deleted in Williams syndrome.
Synonyms:	FKBP36



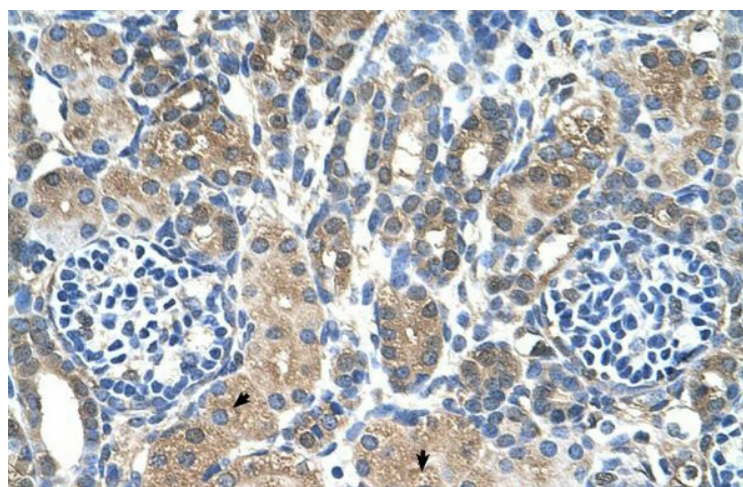
[View online »](#)

**Note:** Immunogen sequence homology: Horse: 100%; Human: 100%; Rabbit: 100%; Dog: 94%; Pig: 94%; Rat: 94%; Mouse: 94%; Goat: 88%; Bovine: 88%; Guinea pig: 82%

### Product images:



WB Suggested Anti-MTA2 Antibody Titration: 1.25ug/ml; Positive Control: Jurkat cell lysate; MTA2 is supported by BioGPS gene expression data to be expressed in Jurkat



Human kidney