

Product datasheet for **TA332101**

Ribonuclease T2 (RNASET2) Rabbit Polyclonal Antibody

Product data:

Product Type:	Primary Antibodies
Applications:	IHC, WB
Recommended Dilution:	WB
Reactivity:	Human
Host:	Rabbit
Isotype:	IgG
Clonality:	Polyclonal
Immunogen:	The immunogen for Anti-RNASET2 Antibody: synthetic peptide directed towards the middle region of human RNASET2. Synthetic peptide located within the following region: RSRFWKHEWEKHGTCAAQVDALNSQKKYFGRSLELYRELDLNSVLLKLG1
Formulation:	Liquid. Purified antibody supplied in 1x PBS buffer with 0.09% (w/v) sodium azide and 2% sucrose. <i>Note that this product is shipped as lyophilized powder to China customers.</i>
Conjugation:	Unconjugated
Storage:	Store at -20°C as received.
Stability:	Stable for 12 months from date of receipt.
Predicted Protein Size:	29 kDa
Gene Name:	ribonuclease T2
Database Link:	NP_003721 Entrez Gene 8635 Human O00584
Background:	This ribonuclease gene is a novel member of the Rh/T2/S-glycoprotein class of extracellular ribonucleases. It is a single copy gene that maps to 6q27, a region associated with human malignancies and chromosomal rearrangement. This ribonuclease gene is a novel member of the Rh/T2/S-glycoprotein class of extracellular ribonucleases. It is a single copy gene that maps to 6q27, a region associated with human malignancies and chromosomal rearrangement. Sequence Note: The RefSeq transcript and protein were derived from genomic sequence to make the sequence consistent with the reference genome assembly. The genomic coordinates used for the transcript record were based on alignments.



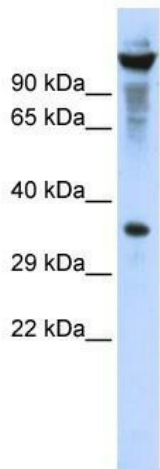
[View online »](#)

Synonyms: bA514O12.3; RNASE6PL

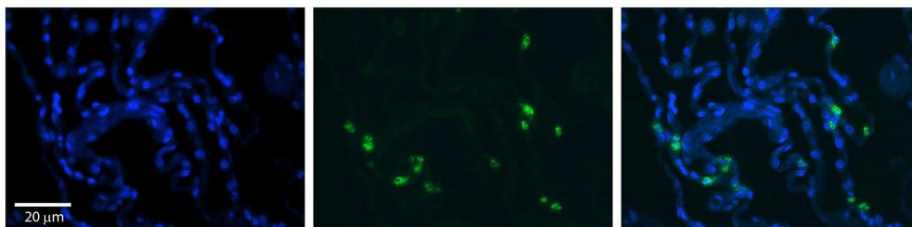
Note: Immunogen sequence homology: Human: 100%; Dog: 79%; Horse: 79%; Rat: 75%

Protein Families: Secreted Protein

Product images:



WB Suggested Anti-RNASET2 Antibody Titration: 0.2-1 ug/ml; ELISA Titer: 1: 62500; Positive Control: 293T cell lysate RNASET2 is strongly supported by BioGPS gene expression data to be expressed in Human HEK293T cells



Rabbit Anti-RNASET2 Antibody; Formalin Fixed Paraffin Embedded Tissue: Human Lung Tissue; Observed Staining: Cytoplasmic in in alveolar cells, type I and II; Primary Antibody Concentration: 1: 100; Other Working Concentrations: 1/600; Secondary Antibody: