

Product datasheet for **TA332100**

MRP3 (ABCC3) Rabbit Polyclonal Antibody

Product data:

Product Type:	Primary Antibodies
Applications:	WB
Recommended Dilution:	WB
Reactivity:	Human
Host:	Rabbit
Isotype:	IgG
Clonality:	Polyclonal
Immunogen:	The immunogen for Anti-ABCC3 Antibody: synthetic peptide directed towards the middle region of human ABCC3. Synthetic peptide located within the following region: KVHMKGSVAYVPQQAWIQNCTLQENVLFGKALNPKRYQQTLEACALLADL
Formulation:	Liquid. Purified antibody supplied in 1x PBS buffer with 0.09% (w/v) sodium azide and 2% sucrose. <i>Note that this product is shipped as lyophilized powder to China customers.</i>
Conjugation:	Unconjugated
Storage:	Store at -20°C as received.
Stability:	Stable for 12 months from date of receipt.
Predicted Protein Size:	168 kDa
Gene Name:	ATP binding cassette subfamily C member 3
Database Link:	NP_003777 Entrez Gene 8714 Human O15438



[View online »](#)

Background:

ABCC3 is a member of the superfamily of ATP-binding cassette (ABC) transporters. ABC proteins transport various molecules across extra- and intra-cellular membranes. ABC genes are divided into seven distinct subfamilies (ABC1, MDR/TAP, MRP, ALD, OABP, GCN20, White). This protein is a member of the MRP subfamily which is involved in multi-drug resistance. The specific function of this protein has not yet been determined; however, this protein may play a role in the transport of biliary and intestinal excretion of organic anions. Alternatively spliced variants which encode different protein isoforms have been described; however, not all variants have been fully characterized. The protein encoded by this gene is a member of the superfamily of ATP-binding cassette (ABC) transporters. ABC proteins transport various molecules across extra- and intra-cellular membranes. ABC genes are divided into seven distinct subfamilies (ABC1, MDR/TAP, MRP, ALD, OABP, GCN20, White). This protein is a member of the MRP subfamily which is involved in multi-drug resistance. The specific function of this protein has not yet been determined; however, this protein may play a role in the transport of biliary and intestinal excretion of organic anions. Alternatively spliced variants which encode different protein isoforms have been described; however, not all variants have been fully characterized. Publication Note: This RefSeq record includes a subset of the publications that are available for this gene. Please see the Entrez Gene record to access additional publications.

Synonyms:

ABC31; cMOAT2; EST90757; MLP2; MOAT-D; MRP3

Note:

Immunogen sequence homology: Human: 100%; Pig: 86%; Rat: 79%; Horse: 79%; Guinea pig: 79%; Dog: 77%

Protein Families:

Druggable Genome, Transmembrane

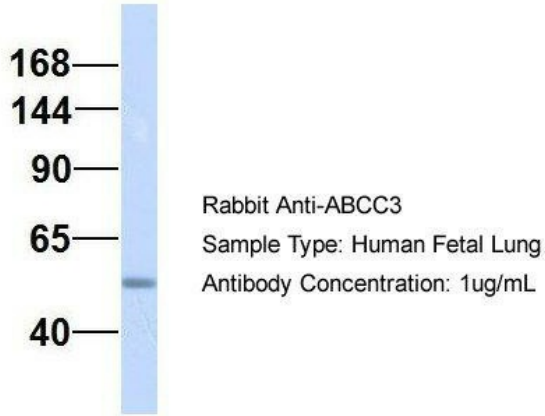
Protein Pathways:

ABC transporters

Product images:

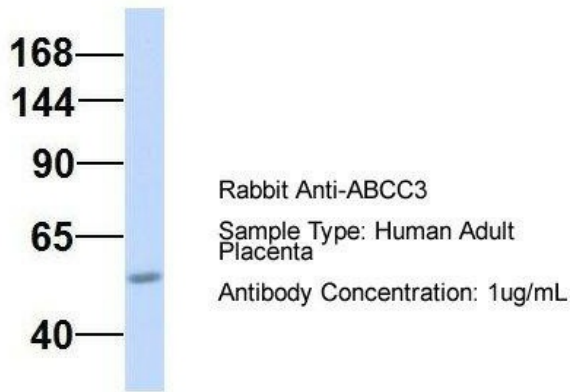
WB Suggested Anti-ABCC3 Antibody Titration: 0.2-1 ug/ml; ELISA Titer: 1: 312500; Positive Control: MCF7 cell lysate

ABCC3



2Hum. Fetal Lung; Host: Rabbit; Target Name: NSUN6; Sample Tissue: Human Fetal Lung; Antibody Dilution: 1.0ug/ml

ABCC3



3Hum. Adult Placenta; Host: Rabbit; Target Name: CHAD; Sample Tissue: Human Adult Placenta; Antibody Dilution: 1.0ug/ml