

Product datasheet for **TA332099**

PAG3 (ASAP2) Rabbit Polyclonal Antibody

Product data:

Product Type:	Primary Antibodies
Applications:	WB
Recommended Dilution:	WB
Reactivity:	Human
Host:	Rabbit
Isotype:	IgG
Clonality:	Polyclonal
Immunogen:	The immunogen for Anti-ASAP2 Antibody is: synthetic peptide directed towards the N-terminal region of Human ASAP2. Synthetic peptide located within the following region: LSTDLHTIKQAQDEERRQLIQLRDILKSALQVEQKEDSQIRQSTAYSLHQ
Formulation:	Liquid. Purified antibody supplied in 1x PBS buffer with 0.09% (w/v) sodium azide and 2% sucrose. <i>Note that this product is shipped as lyophilized powder to China customers.</i>
Conjugation:	Unconjugated
Storage:	Store at -20°C as received.
Stability:	Stable for 12 months from date of receipt.
Predicted Protein Size:	112 kDa
Gene Name:	ArfGAP with SH3 domain, ankyrin repeat and PH domain 2
Database Link:	NP_003878 Entrez Gene 8853 Human O43150



[View online »](#)

Background:

This gene encodes a multidomain protein containing an N-terminal alpha-helical region with a coiled-coil motif, followed by a pleckstrin homology (PH) domain, an Arf-GAP domain, an ankyrin homology region, a proline-rich region, and a C-terminal Src homology 3 (SH3) domain. The protein localizes in the Golgi apparatus and at the plasma membrane, where it colocalizes with protein tyrosine kinase 2-beta (PYK2). The encoded protein forms a stable complex with PYK2 in vivo. This interaction appears to be mediated by binding of its SH3 domain to the C-terminal proline-rich domain of PYK2. The encoded protein is tyrosine phosphorylated by activated PYK2. It has catalytic activity for class I and II ArfGAPs in vitro, and can bind the class III Arf ARF6 without immediate GAP activity. The encoded protein is believed to function as an ARF GAP that controls ARF-mediated vesicle budding when recruited to Golgi membranes. In addition, it functions as a substrate and downstream target for PYK2 and SRC, a pathway that may be involved in the regulation of vesicular transport.

Synonyms:

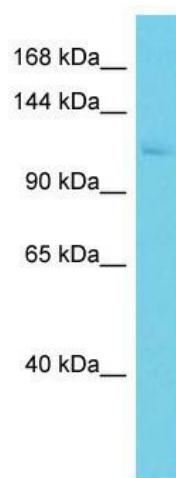
AMAP2; CENTB3; DDEF2; PAG3; PAP; Pap-alpha; SHAG1

Note:

Immunogen sequence homology: Dog: 100%; Human: 100%; Pig: 93%; Rat: 93%; Horse: 93%; Mouse: 93%; Zebrafish: 93%; Rabbit: 78%

Protein Pathways:

Endocytosis, Fc gamma R-mediated phagocytosis

Product images:

Host: Rabbit; Target Name: ASAP2; Sample Tissue: MCF7 Whole Cell lysates; Antibody Dilution: 1.0ug/ml