

Product datasheet for **TA332098**

Proteinase Activated Receptor 4 (F2RL3) Rabbit Polyclonal Antibody

Product data:

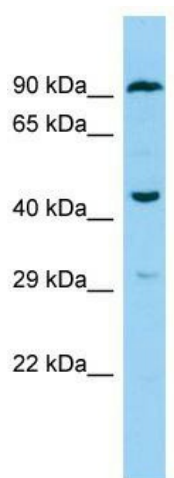
Product Type:	Primary Antibodies
Applications:	WB
Recommended Dilution:	WB
Reactivity:	Human
Host:	Rabbit
Isotype:	IgG
Clonality:	Polyclonal
Immunogen:	The immunogen for Anti-F2RL3 Antibody is: synthetic peptide directed towards the C-terminal region of Human F2RL3. Synthetic peptide located within the following region: LNSCVDPFIYYVSAEFRDKVRAGLFQRSPGDTVASKASAEGGSRGMGTH
Formulation:	Liquid. Purified antibody supplied in 1x PBS buffer with 0.09% (w/v) sodium azide and 2% sucrose.
Conjugation:	Unconjugated
Storage:	Store at -20°C as received.
Stability:	Stable for 12 months from date of receipt.
Predicted Protein Size:	42 kDa
Gene Name:	F2R like thrombin/trypsin receptor 3
Database Link:	NP_003941 Entrez Gene 9002 Human Q96RI0
Background:	Coagulation factor II (thrombin) receptor-like 3 (F2RL3) is a member of the large family of 7-transmembrane-region receptors that couple to guanosine-nucleotide-binding proteins. F2RL3 is also a member of the protease-activated receptor family. F2RL3 is activated by proteolytic cleavage of its extracellular amino terminus. The new amino terminus functions as a tethered ligand and activates the receptor. F2RL3 is activated by thrombin and trypsin.
Synonyms:	PAR4
Note:	Immunogen sequence homology: Human: 100%
Protein Families:	Druggable Genome, GPCR, Transmembrane



[View online »](#)

Protein Pathways: Neuroactive ligand-receptor interaction

Product images:



Host: Rabbit; Target Name: F2RL3; Sample Tissue: THP-1 Whole Cell lysates; Antibody Dilution: 1.0ug/ml