

## Product datasheet for **TA332096**

### Surb7 (MED21) Rabbit Polyclonal Antibody

#### Product data:

Product Type:	Primary Antibodies
Applications:	WB
Recommended Dilution:	WB
Reactivity:	Human
Host:	Rabbit
Isotype:	IgG
Clonality:	Polyclonal
Immunogen:	The immunogen for Anti-MED21 Antibody: synthetic peptide directed towards the middle region of human MED21. Synthetic peptide located within the following region: DSLPSSEESTAAALQAASLYKLEENHEAATCLEDVVYRGDMLEKIQSALA
Formulation:	Liquid. Purified antibody supplied in 1x PBS buffer with 0.09% (w/v) sodium azide and 2% sucrose.
Conjugation:	Unconjugated
Storage:	Store at -20°C as received.
Stability:	Stable for 12 months from date of receipt.
Predicted Protein Size:	15 kDa
Gene Name:	mediator complex subunit 21
Database Link:	<a href="#">NP_004255</a> <a href="#">Entrez Gene 9412 Human</a> <a href="#">Q13503</a>
Background:	MED21 belongs to the Mediator complex subunit 21 family. It is the component of the Mediator complex, a coactivator involved in the regulated transcription of nearly all RNA polymerase II-dependent genes. Mediator functions as a bridge to convey information from gene-specific regulatory proteins to the basal RNA polymerase II transcription machinery. Mediator is recruited to promoters by direct interactions with regulatory proteins and serves as a scaffold for the assembly of a functional preinitiation complex with RNA polymerase II and the general transcription factors.
Synonyms:	hSrb7; SRB7; SURB7

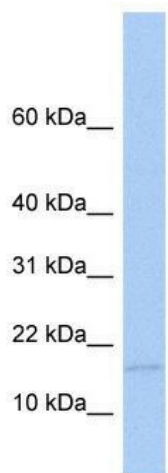


[View online »](#)

**Note:** Immunogen sequence homology: Dog: 100%; Pig: 100%; Rat: 100%; Horse: 100%; Human: 100%; Mouse: 100%; Bovine: 100%; Zebrafish: 100%; Guinea pig: 100%

**Protein Families:** Transcription Factors

**Product images:**



WB Suggested Anti-MED21 Antibody Titration:  
0.2-1 ug/ml; ELISA Titer: 1: 62500; Positive  
Control: Human brain