

Product datasheet for **TA332095**

FOXD1 Rabbit Polyclonal Antibody

Product data:

Product Type:	Primary Antibodies
Applications:	WB
Recommended Dilution:	WB
Reactivity:	Human
Host:	Rabbit
Isotype:	IgG
Clonality:	Polyclonal
Immunogen:	The immunogen for Anti-FOXD1 Antibody: synthetic peptide directed towards the middle region of human FOXD1. Synthetic peptide located within the following region: RTAFGYRPHPLGAALPGPLPASAAKAGGPGASALARSPFSIESIIGGSLG
Formulation:	Liquid. Purified antibody supplied in 1x PBS buffer with 0.09% (w/v) sodium azide and 2% sucrose. <i>Note that this product is shipped as lyophilized powder to China customers.</i>
Conjugation:	Unconjugated
Storage:	Store at -20°C as received.
Stability:	Stable for 12 months from date of receipt.
Predicted Protein Size:	46 kDa
Gene Name:	forkhead box D1
Database Link:	NP_004463 Entrez Gene 2297 Human Q16676
Background:	FOXD1 belongs to the forkhead family of transcription factors which is characterized by a distinct forkhead domain. The specific function of this protein has not yet been determined; however, it may play a role in tumor formation. This intronless gene belongs to the forkhead family of transcription factors which is characterized by a distinct forkhead domain. The specific function of this gene has not yet been determined; however, it may play a role in tumor formation.
Synonyms:	FKHL8; FREAC-4; FREAC4

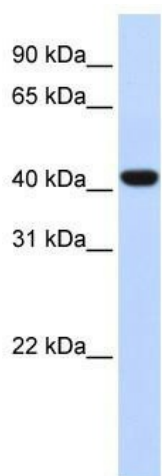


[View online »](#)

Note: Immunogen sequence homology: Human: 100%; Mouse: 93%; Rat: 86%

Protein Families: Transcription Factors

Product images:



WB Suggested Anti-FOXD1 Antibody Titration:
0.2-1 ug/ml; ELISA Titer: 1: 312500; Positive
Control: Human Lung