

Product datasheet for **TA332094**

GNG4 Rabbit Polyclonal Antibody

Product data:

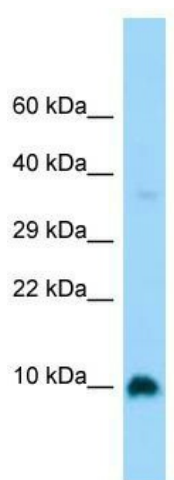
Product Type:	Primary Antibodies
Applications:	WB
Recommended Dilution:	WB
Reactivity:	Human
Host:	Rabbit
Isotype:	IgG
Clonality:	Polyclonal
Immunogen:	The immunogen for Anti-GNG4 Antibody is: synthetic peptide directed towards the middle region of Human GNG4. Synthetic peptide located within the following region: EACMDRVKVSQAAADLLAYCEAHVREDPLIIPVPASENPFREKKFFCTIL
Formulation:	Liquid. Purified antibody supplied in 1x PBS buffer with 0.09% (w/v) sodium azide and 2% sucrose. <i>Note that this product is shipped as lyophilized powder to China customers.</i>
Conjugation:	Unconjugated
Storage:	Store at -20°C as received.
Stability:	Stable for 12 months from date of receipt.
Predicted Protein Size:	8 kDa
Gene Name:	G protein subunit gamma 4
Database Link:	NP_004476 Entrez Gene 2786 Human P50150
Background:	Guanine nucleotide-binding proteins (G proteins) are involved as a modulator or transducer in various transmembrane signaling systems. The beta and gamma chains are required for the GTPase activity, for replacement of GDP by GTP, and for G protein-effector interaction.
Synonyms:	DKFZp547K1018; FLJ23803; FLJ34187
Note:	Immunogen sequence homology: Dog: 100%; Pig: 100%; Rat: 100%; Horse: 100%; Human: 100%; Mouse: 100%; Bovine: 100%; Rabbit: 100%; Zebrafish: 100%; Guinea pig: 100%
Protein Families:	Druggable Genome



[View online »](#)

Protein Pathways: Chemokine signaling pathway

Product images:



Host: Rabbit; Target Name: GNG4; Sample Tissue: Fetal Brain lysates; Antibody Dilution: 1.0ug/ml