

Product datasheet for **TA332092**

CDC23 Rabbit Polyclonal Antibody

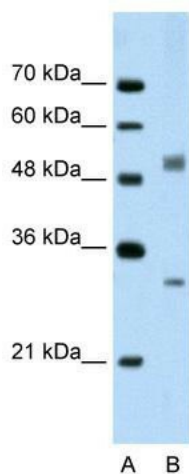
Product data:

Product Type:	Primary Antibodies
Applications:	WB
Recommended Dilution:	WB
Reactivity:	Human
Host:	Rabbit
Isotype:	IgG
Clonality:	Polyclonal
Immunogen:	The immunogen for Anti-IRF6 Antibody: synthetic peptide directed towards the C terminal of human IRF6. Synthetic peptide located within the following region: FLSDLIAHQKGQIEKQPPFEIYLFCGEEWPDGKPLERKLILVQVIPVVAR
Formulation:	Liquid. Purified antibody supplied in 1x PBS buffer with 0.09% (w/v) sodium azide and 2% sucrose. <i>Note that this product is shipped as lyophilized powder to China customers.</i>
Conjugation:	Unconjugated
Storage:	Store at -20°C as received.
Stability:	Stable for 12 months from date of receipt.
Predicted Protein Size:	65 kDa
Gene Name:	cell division cycle 23
Database Link:	NP_004652 Entrez Gene 8697 Human Q9UJX2



[View online »](#)

Background:	IRF6 is a member of the interferon regulatory transcription factor (IRF) family. Family members share a highly-conserved N-terminal helix-turn-helix DNA-binding domain and a less conserved C-terminal protein-binding domain. Mutations in its gene can cause van der Woude syndrome and popliteal pterygium syndrome. This protein is involved in palate formation. The protein encoded by this gene shares strong similarity with <i>Saccharomyces cerevisiae</i> Cdc23, a protein essential for cell cycle progression through the G2/M transition. This protein is a component of anaphase-promoting complex (APC), which is composed of eight protein subunits and highly conserved in eucaryotic cells. APC catalyzes the formation of cyclin B-ubiquitin conjugate that is responsible for the ubiquitin-mediated proteolysis of B-type cyclins. This protein and 3 other members of the APC complex contain the TPR (tetratricopeptide repeat), a protein domain important for protein-protein interaction.
Synonyms:	ANAPC8; APC8; CUT23
Note:	Immunogen sequence homology: Dog: 100%; Pig: 100%; Rat: 100%; Horse: 100%; Human: 100%; Mouse: 100%; Bovine: 100%; Rabbit: 100%; Guinea pig: 100%; Sheep: 93%
Protein Families:	Druggable Genome
Protein Pathways:	Cell cycle, Oocyte meiosis, Progesterone-mediated oocyte maturation, Ubiquitin mediated proteolysis

Product images:

WB Suggested Anti-IRF6 Antibody Titration:
2.5ug/ml; Positive Control: Jurkat cell lysate