

Product datasheet for **TA332091**

MTMR7 Rabbit Polyclonal Antibody

Product data:

Product Type:	Primary Antibodies
Applications:	WB
Recommended Dilution:	WB
Reactivity:	Human, Mouse
Host:	Rabbit
Isotype:	IgG
Clonality:	Polyclonal
Immunogen:	The immunogen for Anti-MTMR7 Antibody is: synthetic peptide directed towards the C-terminal region of Human MTMR7. Synthetic peptide located within the following region: NLKSSDPDLSANSQESGVEDLSCRSPSGGEHAPSEDSGKDRDSDEAVFL
Formulation:	Liquid. Purified antibody supplied in 1x PBS buffer with 0.09% (w/v) sodium azide and 2% sucrose. <i>Note that this product is shipped as lyophilized powder to China customers.</i>
Conjugation:	Unconjugated
Storage:	Store at -20°C as received.
Stability:	Stable for 12 months from date of receipt.
Predicted Protein Size:	73 kDa
Gene Name:	myotubularin related protein 7
Database Link:	NP_004677 Entrez Gene 54384 Mouse Entrez Gene 9108 Human Q9Y216
Background:	This gene encodes a member of the myotubularin family of tyrosine/dual-specificity phosphatases. The encoded protein is characterized by four distinct domains that are conserved among all members of the myotubularin family: the glucosyltransferase, Rab-like GTPase activator and myotubularins domain, the Rac-induced recruitment domain, the protein tyrosine phosphatases and dual-specificity phosphatases domain and the suppressor of variegation 3-9, enhancer-of-zeste, and trithorax interaction domain. This protein dephosphorylates the target substrates phosphatidylinositol 3-phosphate and inositol 1,3-bisphosphate. A pseudogene of this gene is found on chromosome 5.



[View online »](#)

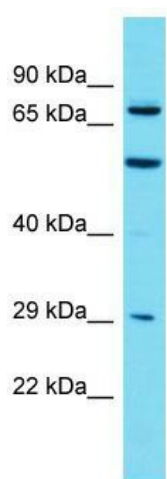
Synonyms: DKFZp781E194; MGC163449; MGC163451

Note: Immunogen sequence homology: Rat: 100%; Human: 100%; Mouse: 100%; Rabbit: 100%; Dog: 93%; Pig: 92%; Guinea pig: 92%; Horse: 86%; Bovine: 86%

Protein Families: Phosphatase

Protein Pathways: Fructose and mannose metabolism, Metabolic pathways, Riboflavin metabolism, Thiamine metabolism

Product images:



Host: Rabbit; Target Name: MTMR7; Sample Tissue: HT1080 Whole Cell lysates; Antibody Dilution: 1.0ug/ml