

Product datasheet for **TA332090**

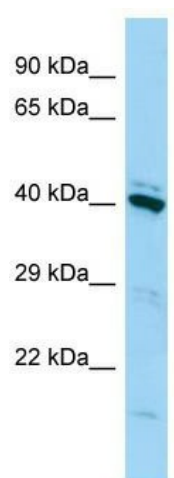
FAM50A Rabbit Polyclonal Antibody

Product data:

Product Type:	Primary Antibodies
Applications:	WB
Recommended Dilution:	WB
Reactivity:	Human
Host:	Rabbit
Isotype:	IgG
Clonality:	Polyclonal
Immunogen:	The immunogen for Anti-FAM50A Antibody is: synthetic peptide directed towards the C-terminal region of Human FAM50A. Synthetic peptide located within the following region: LLSDATVEKDESHAGKVVLRSWYEKKNKHIFPASRWEPYDPEKKWDKYTIR
Formulation:	Liquid. Purified antibody supplied in 1x PBS buffer with 0.09% (w/v) sodium azide and 2% sucrose. <i>Note that this product is shipped as lyophilized powder to China customers.</i>
Conjugation:	Unconjugated
Storage:	Store at -20°C as received.
Stability:	Stable for 12 months from date of receipt.
Predicted Protein Size:	40 kDa
Gene Name:	family with sequence similarity 50 member A
Database Link:	NP_004690 Entrez Gene 9130 Human Q14320
Background:	This gene belongs to the FAM50 family. The encoded protein is highly conserved in length and sequence across different species. It is a basic protein containing a nuclear localization signal, and may function as a DNA-binding protein or a transcriptional factor.
Synonyms:	9F; DXS9928E; HXC-26; HXC26; XAP5
Note:	Immunogen sequence homology: Dog: 100%; Pig: 100%; Rat: 100%; Horse: 100%; Human: 100%; Mouse: 100%; Bovine: 100%; Rabbit: 100%; Zebrafish: 100%; Guinea pig: 93%; Goat: 75%



[View online »](#)

Product images:

Host: Rabbit; Target Name: FAM50A; Sample Tissue: 293T Whole Cell lysates; Antibody Dilution: 1.0ug/ml; FAM50A is supported by BioGPS gene expression data to be expressed in HEK293T