

Product datasheet for **TA332088**

AP4M1 Rabbit Polyclonal Antibody

Product data:

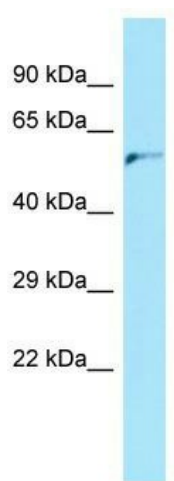
Product Type:	Primary Antibodies
Applications:	WB
Recommended Dilution:	WB
Reactivity:	Human
Host:	Rabbit
Isotype:	IgG
Clonality:	Polyclonal
Immunogen:	The immunogen for Anti-AP4M1 Antibody is: synthetic peptide directed towards the C-terminal region of Human AP4M1. Synthetic peptide located within the following region: QELSSPEQKAELAEGALRWDLPRVQGGSQLSGLFQMDVPGPPGPPSHGLS
Formulation:	Liquid. Purified antibody supplied in 1x PBS buffer with 0.09% (w/v) sodium azide and 2% sucrose. <i>Note that this product is shipped as lyophilized powder to China customers.</i>
Conjugation:	Unconjugated
Storage:	Store at -20°C as received.
Stability:	Stable for 12 months from date of receipt.
Predicted Protein Size:	50 kDa
Gene Name:	adaptor related protein complex 4 mu 1 subunit
Database Link:	NP_004713 Entrez Gene 9179 Human O00189
Background:	This gene encodes a subunit of the heterotetrameric AP-4 complex. The encoded protein belongs to the adaptor complexes medium subunits family. This AP-4 complex is involved in the recognition and sorting of cargo proteins with tyrosine-based motifs from the trans-golgi network to the endosomal-lysosomal system.
Synonyms:	CPSQ3; MU-4; MU-ARP2; SPG50
Note:	Immunogen sequence homology: Human: 100%; Rat: 93%; Goat: 93%; Horse: 93%; Bovine: 93%; Rabbit: 93%; Dog: 86%; Pig: 86%; Mouse: 86%; Guinea pig: 86%



[View online »](#)

Protein Pathways: Lysosome

Product images:



WB Suggested Anti-AP4M1 Antibody; Titration:
1.0 ug/ml; Positive Control: 293T Whole Cell