

## Product datasheet for **TA332087**

### GCNT3 Rabbit Polyclonal Antibody

#### Product data:

Product Type:	Primary Antibodies
Applications:	IHC, WB
Recommended Dilution:	WB, IHC
Reactivity:	Human
Host:	Rabbit
Isotype:	IgG
Clonality:	Polyclonal
Immunogen:	The immunogen for Anti-GCNT3 Antibody: synthetic peptide directed towards the C terminal of human GCNT3. Synthetic peptide located within the following region: AICVYGAGDLNWMLQNHLLANKFDPKVDNALQCLEEYLRKAIYGTEL
Formulation:	Liquid. Purified antibody supplied in 1x PBS buffer with 0.09% (w/v) sodium azide and 2% sucrose. <i>Note that this product is shipped as lyophilized powder to China customers.</i>
Conjugation:	Unconjugated
Storage:	Store at -20°C as received.
Stability:	Stable for 12 months from date of receipt.
Predicted Protein Size:	51 kDa
Gene Name:	glucosaminyl (N-acetyl) transferase 3, mucin type
Database Link:	<a href="#">NP_004742</a> <a href="#">Entrez Gene 9245 Human</a> <a href="#">O95395</a>
Background:	This enzyme catalyzes O-glycan branch synthesis of the core 2 and core 4 type in mucins and controls expression of core 2 branched oligosaccharides and I antigens on the cell surface. This enzyme catalyzes O-glycan branch synthesis of the core 2 and core 4 type in mucins and controls expression of core 2 branched oligosaccharides and I antigens on the cell surface.
Synonyms:	4GnT; C2; C2GNT2; C2GNTM; C24GNT; GNTM



[View online »](#)

**Note:** Immunogen sequence homology: Dog: 100%; Pig: 100%; Human: 100%; Rat: 93%; Horse: 93%; Mouse: 93%; Sheep: 93%; Bovine: 93%; Rabbit: 93%; Guinea pig: 91%; Yeast: 89%

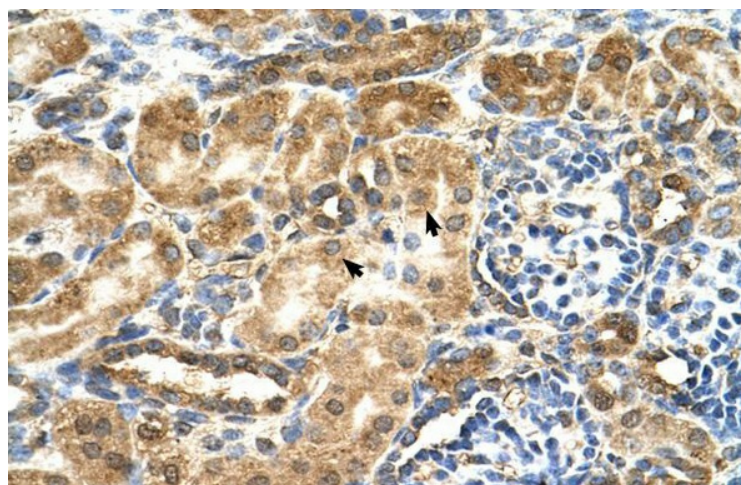
**Protein Families:** Transmembrane

**Protein Pathways:** Metabolic pathways, O-Glycan biosynthesis

**Product images:**



WB Suggested Anti-GCNT3 Antibody Titration: 1.25ug/ml; Positive Control: 293T cells lysate



Human kidney