

## Product datasheet for **TA332086**

### SNRNP40 Rabbit Polyclonal Antibody

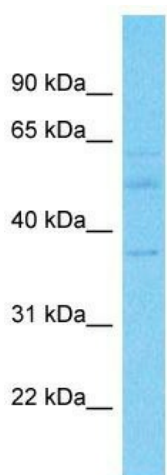
#### Product data:

Product Type:	Primary Antibodies
Applications:	WB
Recommended Dilution:	WB
Reactivity:	Human
Host:	Rabbit
Isotype:	IgG
Clonality:	Polyclonal
Immunogen:	The immunogen for Anti-SNRNP40 Antibody is: synthetic peptide directed towards the middle region of Human SNRNP40. Synthetic peptide located within the following region: SASTDKTVAVWDSSETGERVKRLKGHTSFVNSCYPARRGQPLVCTGSDDG
Formulation:	Liquid. Purified antibody supplied in 1x PBS buffer with 0.09% (w/v) sodium azide and 2% sucrose. <i>Note that this product is shipped as lyophilized powder to China customers.</i>
Conjugation:	Unconjugated
Storage:	Store at -20°C as received.
Stability:	Stable for 12 months from date of receipt.
Predicted Protein Size:	39 kDa
Gene Name:	small nuclear ribonucleoprotein U5 subunit 40
Database Link:	<a href="#">NP_004805</a> <a href="#">Entrez Gene 9410 Human</a> <a href="#">Q96DI7</a>
Background:	This gene encodes a component of the U5 small nuclear ribonucleoprotein (snRNP) particle. The U5 snRNP is part of the spliceosome, a multiprotein complex that catalyzes the removal of introns from pre-messenger RNAs.
Synonyms:	40K; HPRP8BP; PRP8BP; PRPF8BP; SPF38; WDR57
Note:	Immunogen sequence homology: Dog: 100%; Pig: 100%; Rat: 100%; Horse: 100%; Human: 100%; Mouse: 100%; Bovine: 100%; Rabbit: 100%; Zebrafish: 100%; Guinea pig: 100%
Protein Pathways:	Spliceosome



[View online »](#)

## Product images:



Host: Rabbit  
Target Name: SNRNP40  
Sample Tissue: Fetal Kidney Lysate  
Antibody Dilution: 1.0 $\mu$ g/ml

Host: Rabbit; Target Name: SNRNP40; Sample Tissue: Fetal Kidney lysates; Antibody Dilution: 1.0 $\mu$ g/ml