

## Product datasheet for **TA332080**

### PITX3 Rabbit Polyclonal Antibody

#### Product data:

Product Type:	Primary Antibodies
Applications:	WB
Recommended Dilution:	WB
Reactivity:	Human
Host:	Rabbit
Isotype:	IgG
Clonality:	Polyclonal
Immunogen:	The immunogen for Anti-PITX3 Antibody: synthetic peptide directed towards the middle region of human PITX3. Synthetic peptide located within the following region: YEEVYPGYSYGNWPPKALAPPLAAKTFPFAFNSVNVGPLASQPVFSPPSS
Formulation:	Liquid. Purified antibody supplied in 1x PBS buffer with 0.09% (w/v) sodium azide and 2% sucrose. <i>Note that this product is shipped as lyophilized powder to China customers.</i>
Conjugation:	Unconjugated
Storage:	Store at -20°C as received.
Stability:	Stable for 12 months from date of receipt.
Predicted Protein Size:	32 kDa
Gene Name:	paired like homeodomain 3
Database Link:	<a href="#">NP_005020</a> <a href="#">Entrez Gene 5309 Human</a> <a href="#">O75364</a>

[View online »](#)

**Background:**

PITX3 is a member of the RIEG/PITX homeobox family, which is in the bicoid class of homeodomain proteins. Members of this family act as transcription factors. Mutations of PITX3 have been associated with anterior segment mesenchymal dysgenesis (ASMD) and congenital cataracts. PITX3 is involved in lens formation during eye development. This gene encodes a member of the RIEG/PITX homeobox family, which is in the bicoid class of homeodomain proteins. Members of this family act as transcription factors. Mutations of this gene have been associated with anterior segment mesenchymal dysgenesis (ASMD) and congenital cataracts. This protein is involved in lens formation during eye development. This gene encodes a member of the RIEG/PITX homeobox family, which is in the bicoid class of homeodomain proteins. Members of this family act as transcription factors. This protein is involved in lens formation during eye development. Mutations of this gene have been associated with anterior segment mesenchymal dysgenesis and congenital cataracts. Publication Note: This RefSeq record includes a subset of the publications that are available for this gene. Please see the Entrez Gene record to access additional publications.

**Synonyms:**

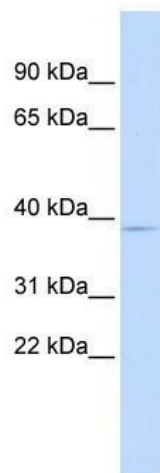
ASMD; ASOD; CTPP4; CTRCT11; PTX3

**Note:**

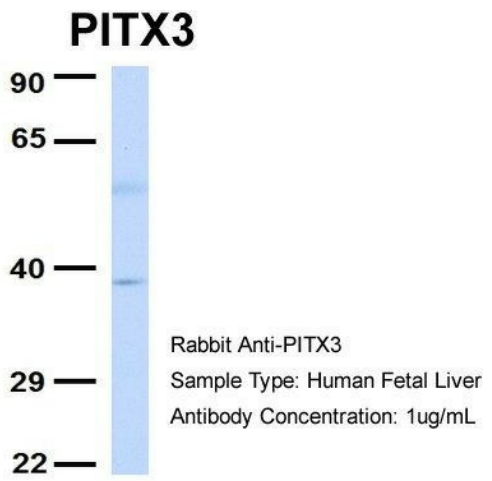
Immunogen sequence homology: Dog: 100%; Pig: 100%; Rat: 100%; Horse: 100%; Human: 100%; Mouse: 100%; Sheep: 100%; Bovine: 100%; Rabbit: 100%; Guinea pig: 100%

**Protein Families:**

Druggable Genome, Transcription Factors

**Product images:**


WB Suggested Anti-PITX3 Antibody Titration: 0.2-1 ug/ml; ELISA Titer: 1: 312500; Positive Control: Human Liver



Host: Rabbit; Target Name: PITX3; Sample Tissue: Human Fetal Liver; Antibody Dilution: 1.0ug/ml