

Product datasheet for **TA332079**

PSMD5 Rabbit Polyclonal Antibody

Product data:

Product Type:	Primary Antibodies
Applications:	WB
Recommended Dilution:	WB
Reactivity:	Human
Host:	Rabbit
Isotype:	IgG
Clonality:	Polyclonal
Immunogen:	The immunogen for Anti-PSMD5 Antibody is: synthetic peptide directed towards the C-terminal region of Human PSMD5. Synthetic peptide located within the following region: FEMIESQDPTMIGVAVDTVGILGSNVEGKQVLQKTGTRFERLLMRIGHQS
Formulation:	Liquid. Purified antibody supplied in 1x PBS buffer with 0.09% (w/v) sodium azide and 2% sucrose. <i>Note that this product is shipped as lyophilized powder to China customers.</i>
Conjugation:	Unconjugated
Storage:	Store at -20°C as received.
Stability:	Stable for 12 months from date of receipt.
Predicted Protein Size:	55 kDa
Gene Name:	proteasome 26S subunit, non-ATPase 5
Database Link:	NP_005038 Entrez Gene 5711 Human Q16401



[View online »](#)

Background:

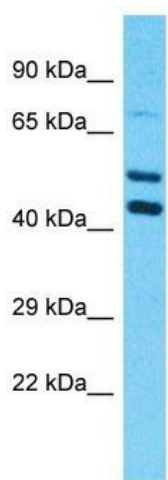
The 26S proteasome is a multicatalytic proteinase complex with a highly ordered structure composed of 2 complexes, a 20S core and a 19S regulator. The 20S core is composed of 4 rings of 28 non-identical subunits; 2 rings are composed of 7 alpha subunits and 2 rings are composed of 7 beta subunits. The 19S regulator is composed of a base, which contains 6 ATPase subunits and 2 non-ATPase subunits, and a lid, which contains up to 10 non-ATPase subunits. Proteasomes are distributed throughout eukaryotic cells at a high concentration and cleave peptides in an ATP/ubiquitin-dependent process in a non-lysosomal pathway. This gene encodes a non-ATPase subunit of the 19S regulator base that functions as a chaperone protein during 26S proteasome assembly.

Synonyms:

S5B

Note:

Immunogen sequence homology: Dog: 100%; Pig: 100%; Horse: 100%; Human: 100%; Bovine: 100%; Rat: 93%; Mouse: 93%; Guinea pig: 93%; Rabbit: 86%; Zebrafish: 86%

Product images:

Host: Rabbit

Target Name: PSMD5

Sample Tissue: OVCAR-3 Cell Lysate

Antibody Dilution: 1.0µg/ml

Host: Rabbit; Target Name: PSMD5; Sample Tissue: OVCAR-3 Whole Cell lysates; Antibody Dilution: 1.0ug/ml; PSMD5 is strongly supported by BioGPS gene expression data to be expressed in Human OVCAR3 cells