

Product datasheet for **TA332076**

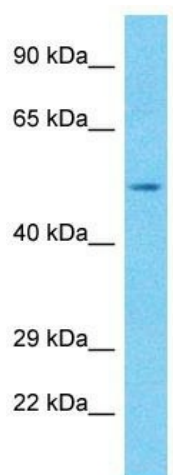
RBM1A1 Rabbit Polyclonal Antibody

Product data:

Product Type:	Primary Antibodies
Applications:	WB
Recommended Dilution:	WB
Reactivity:	Human
Host:	Rabbit
Isotype:	IgG
Clonality:	Polyclonal
Immunogen:	The immunogen for Anti-RBM1A1 Antibody is: synthetic peptide directed towards the C-terminal region of Human RBM1A1. Synthetic peptide located within the following region: REHVCRKDQRNPPSLGRVLPDPREACGSSSYVASIVDGGESRSEKGDSSR
Formulation:	Liquid. Purified antibody supplied in 1x PBS buffer with 0.09% (w/v) sodium azide and 2% sucrose. <i>Note that this product is shipped as lyophilized powder to China customers.</i>
Conjugation:	Unconjugated
Storage:	Store at -20°C as received.
Stability:	Stable for 12 months from date of receipt.
Predicted Protein Size:	54 kDa
Gene Name:	RNA binding motif protein, Y-linked, family 1, member A1
Database Link:	NP_005049 Entrez Gene 5940 Human P0DJD3
Background:	RBM1A1 is a protein containing an RNA-binding motif in the N-terminus and four SRGY (serine, arginine, glycine, tyrosine) boxes in the C-terminus. The gene that encodes RBM1A1 is Y-linked. RBM1A1 may be involved in spermatogenesis. It is required for sperm development, possibly by participating in pre-mRNA splicing in the testis.
Synonyms:	RBM; RBM1; RBM2; RBMY; RBMY1C; YRRM1; YRRM2
Note:	Immunogen sequence homology: Human: 100%



[View online »](#)

Product images:

Host: Rabbit
Target Name: RBMY1A1
Sample Tissue: MCF7 Cell Lysate
Antibody Dilution: 1.0 μ g/ml

Host: Rabbit; Target Name: RBMY1A1; Sample Tissue: MCF7 Whole Cell lysates; Antibody Dilution: 1.0ug/ml