

Product datasheet for **TA332066**

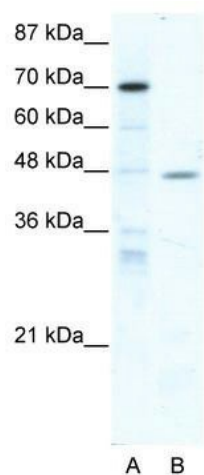
NR2F6 Rabbit Polyclonal Antibody

Product data:

Product Type:	Primary Antibodies
Applications:	WB
Recommended Dilution:	WB
Reactivity:	Human
Host:	Rabbit
Isotype:	IgG
Clonality:	Polyclonal
Immunogen:	The immunogen for Anti-NR2F6 Antibody: synthetic peptide directed towards the middle region of human NR2F6. Synthetic peptide located within the following region: GLHAAPMAAERAVAFMDQVRAFQEQVDKLGRLQVDSAIEYGCLKAIALFTP
Formulation:	Liquid. Purified antibody supplied in 1x PBS buffer with 0.09% (w/v) sodium azide and 2% sucrose. <i>Note that this product is shipped as lyophilized powder to China customers.</i>
Conjugation:	Unconjugated
Storage:	Store at -20°C as received.
Stability:	Stable for 12 months from date of receipt.
Predicted Protein Size:	43 kDa
Gene Name:	nuclear receptor subfamily 2 group F member 6
Database Link:	NP_005225 Entrez Gene 2063 Human P10588
Background:	NR2F6 is a nuclear orphan receptor that belongs to the COUP-TF subfamily
Synonyms:	EAR-2; EAR2; ERBAL2
Note:	Immunogen sequence homology: Dog: 100%; Pig: 100%; Rat: 100%; Human: 100%; Mouse: 100%; Bovine: 100%; Guinea pig: 100%; Zebrafish: 85%
Protein Families:	Druggable Genome, Nuclear Hormone Receptor, Transcription Factors



[View online »](#)

Product images:

WB Suggested Anti-NR2F6 Antibody Titration:
5.0ug/ml; ELISA Titer: 1: 1562500; Positive
Control: HepG2 cell lysate NR2F6 is strongly
supported by BioGPS gene expression data to be
expressed in Human HepG2 cells