

## Product datasheet for **TA332064**

### GPR25 Rabbit Polyclonal Antibody

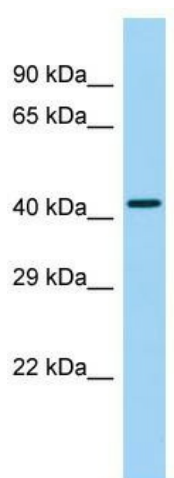
#### Product data:

Product Type:	Primary Antibodies
Applications:	WB
Recommended Dilution:	WB
Reactivity:	Human
Host:	Rabbit
Isotype:	IgG
Clonality:	Polyclonal
Immunogen:	The immunogen for Anti-GPR25 Antibody is: synthetic peptide directed towards the middle region of Human GPR25. Synthetic peptide located within the following region: VALLAGLPSLVYRGLQLPLGGQDSQCGEESHAFQGLSLLLLLLTFVLPL
Formulation:	Liquid. Purified antibody supplied in 1x PBS buffer with 0.09% (w/v) sodium azide and 2% sucrose. <i>Note that this product is shipped as lyophilized powder to China customers.</i>
Conjugation:	Unconjugated
Storage:	Store at -20°C as received.
Stability:	Stable for 12 months from date of receipt.
Predicted Protein Size:	40 kDa
Gene Name:	G protein-coupled receptor 25
Database Link:	<a href="#">NP_005289</a> <a href="#">Entrez Gene 2848 Human</a> <a href="#">O00155</a>
Background:	GPR25 is a orphan receptor.
Synonyms:	G protein-coupled receptor 25; OTTHUMP00000033936
Note:	Immunogen sequence homology: Human: 100%; Rabbit: 85%
Protein Families:	Druggable Genome, GPCR, Transmembrane



[View online »](#)

## Product images:



Host: Rabbit; Target Name: GPR25; Sample  
Tissue: Placenta lysates; Antibody Dilution:  
1.0ug/ml