

Product datasheet for **TA332063**

GPR25 Rabbit Polyclonal Antibody

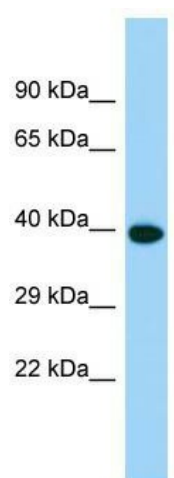
Product data:

Product Type:	Primary Antibodies
Applications:	WB
Recommended Dilution:	WB
Reactivity:	Human
Host:	Rabbit
Isotype:	IgG
Clonality:	Polyclonal
Immunogen:	The immunogen for Anti-GPR25 Antibody is: synthetic peptide directed towards the C-terminal region of Human GPR25. Synthetic peptide located within the following region: LIYLLDRSFRARALDGACGRTGRLARRISSASSLSRDDSSVFCRAQAA
Formulation:	Liquid. Purified antibody supplied in 1x PBS buffer with 0.09% (w/v) sodium azide and 2% sucrose. <i>Note that this product is shipped as lyophilized powder to China customers.</i>
Conjugation:	Unconjugated
Storage:	Store at -20°C as received.
Stability:	Stable for 12 months from date of receipt.
Predicted Protein Size:	40 kDa
Gene Name:	G protein-coupled receptor 25
Database Link:	NP_005289 Entrez Gene 2848 Human O00155
Background:	GPR25 is a orphan receptor.
Synonyms:	G protein-coupled receptor 25; OTTHUMP00000033936
Note:	Immunogen sequence homology: Rat: 100%; Human: 100%; Mouse: 100%; Pig: 93%; Guinea pig: 93%; Rabbit: 86%
Protein Families:	Druggable Genome, GPCR, Transmembrane



[View online »](#)

Product images:



Host: Rabbit; Target Name: GPR25; Sample
Tissue: Fetal Heart lysates; Antibody Dilution:
1.0ug/ml