

Product datasheet for **TA332062**

PHF2 Rabbit Polyclonal Antibody

Product data:

Product Type:	Primary Antibodies
Applications:	WB
Recommended Dilution:	WB
Reactivity:	Human
Host:	Rabbit
Isotype:	IgG
Clonality:	Polyclonal
Immunogen:	The immunogen for Anti-PHF2 Antibody: synthetic peptide directed towards the middle region of human PHF2. Synthetic peptide located within the following region: AAAAKLSQQEEQSKKKKSAKRKLTPTTSPSTSTSIAGTTSTSTTPAS
Formulation:	Liquid. Purified antibody supplied in 1x PBS buffer with 0.09% (w/v) sodium azide and 2% sucrose.
Conjugation:	Unconjugated
Storage:	Store at -20°C as received.
Stability:	Stable for 12 months from date of receipt.
Predicted Protein Size:	121 kDa
Gene Name:	PHD finger protein 2
Database Link:	NP_005383 Entrez Gene 5253 Human O75151



[View online »](#)

Background:

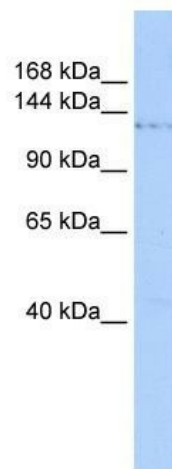
PHF2 is a protein which contains a zinc finger-like PHD (plant homeodomain) finger, distinct from other classes of zinc finger motifs, and a hydrophobic and highly conserved domain. The PHD finger shows the typical Cys4-His-Cys3 arrangement. PHD finger genes are thought to belong to a diverse group of transcriptional regulators possibly affecting eukaryotic gene expression by influencing chromatin structure. This gene encodes a protein which contains a zinc finger-like PHD (plant homeodomain) finger, distinct from other classes of zinc finger motifs, and a hydrophobic and highly conserved domain. The PHD finger shows the typical Cys4-His-Cys3 arrangement. PHD finger genes are thought to belong to a diverse group of transcriptional regulators possibly affecting eukaryotic gene expression by influencing chromatin structure.

Synonyms:

CENP-35; GRC5; JHDM1E

Note:

Immunogen sequence homology: Human: 100%; Rabbit: 100%; Yeast: 91%; Bovine: 83%; Horse: 77%

Product images:

WB Suggested Anti-PHF2 Antibody Titration: 0.2-1 ug/ml; ELISA Titer: 1: 1562500; Positive Control: Jurkat cell lysate