

## Product datasheet for **TA332061**

### ABCA1 Rabbit Polyclonal Antibody

#### Product data:

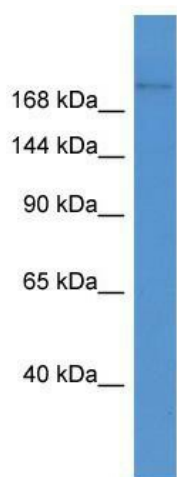
Product Type:	Primary Antibodies
Applications:	WB
Recommended Dilution:	WB
Reactivity:	Mouse
Host:	Rabbit
Isotype:	IgG
Clonality:	Polyclonal
Immunogen:	The immunogen for Anti-Abca1 Antibody: synthetic peptide corresponding to a region of Mouse. Synthetic peptide located within the following region: NRRAFGDKQSCLHPFTEDDAVDPNDSIDPESRETDLLSGMDGKGSYQLK
Formulation:	Liquid. Purified antibody supplied in 1x PBS buffer with 0.09% (w/v) sodium azide and 2% sucrose. <i>Note that this product is shipped as lyophilized powder to China customers.</i>
Conjugation:	Unconjugated
Storage:	Store at -20°C as received.
Stability:	Stable for 12 months from date of receipt.
Predicted Protein Size:	254 kDa
Gene Name:	ATP binding cassette subfamily A member 1
Database Link:	<a href="#">NP_005493</a> <a href="#">Entrez Gene 11303 Mouse</a> <a href="#">O95477</a>
Background:	Abca1 is a cAMP-dependent and sulfonyleurea-sensitive anion transporter. Abca1 is a key gatekeeper influencing intracellular cholesterol transport.
Synonyms:	ABC-1; ABC1; CERP; HDLDT1; TGD
Note:	Immunogen sequence homology: Human: 100%; Pig: 93%; Horse: 93%; Mouse: 93%; Bovine: 93%; Rabbit: 93%; Dog: 86%; Rat: 86%; Guinea pig: 86%
Protein Families:	Druggable Genome, Transmembrane



[View online »](#)

Protein Pathways: ABC transporters

### Product images:



WB Suggested Anti-Abca1 Antibody Titration: 0.2-1 ug/ml; ELISA Titer: 1: 12500; Positive Control: Mouse Kidney