

## Product datasheet for **TA332053**

### TSPAN1 Rabbit Polyclonal Antibody

#### Product data:

Product Type:	Primary Antibodies
Applications:	WB
Recommended Dilution:	WB
Reactivity:	Human
Host:	Rabbit
Isotype:	IgG
Clonality:	Polyclonal
Immunogen:	The immunogen for Anti-TSPAN1 Antibody: synthetic peptide directed towards the middle region of human TSPAN1. Synthetic peptide located within the following region: TMKGLKCCGFTNYTDFEDSPYFKENSAFPPFCCNDNVTNTANETCTKQKA
Formulation:	Liquid. Purified antibody supplied in 1x PBS buffer with 0.09% (w/v) sodium azide and 2% sucrose. <i>Note that this product is shipped as lyophilized powder to China customers.</i>
Conjugation:	Unconjugated
Storage:	Store at -20°C as received.
Stability:	Stable for 12 months from date of receipt.
Predicted Protein Size:	26 kDa
Gene Name:	tetraspanin 1
Database Link:	<a href="#">NP_005718</a> <a href="#">Entrez Gene 10103 Human O60635</a>
Background:	The protein encoded by this gene is a member of the transmembrane 4 superfamily, also known as the tetraspanin family. Most of these members are cell-surface proteins that are characterized by the presence of four hydrophobic domains. The proteins mediate signal transduction events that play a role in the regulation of cell development, activation, growth and motility.
Synonyms:	NET1; TM4C; TM4SF

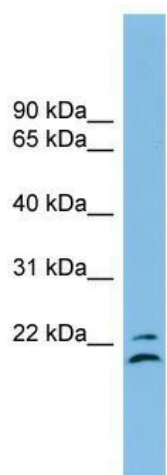


[View online »](#)

**Note:** Immunogen sequence homology: Human: 100%; Rat: 93%; Dog: 91%; Bovine: 90%; Pig: 79%; Guinea pig: 77%

**Protein Families:** Transmembrane

**Product images:**



WB Suggested Anti-TSPAN1 Antibody Titration:  
0.2-1 ug/ml; ELISA Titer: 1: 312500; Positive  
Control: MCF7 cell lysate