

## Product datasheet for **TA332052**

### **RAD50 Rabbit Polyclonal Antibody**

#### **Product data:**

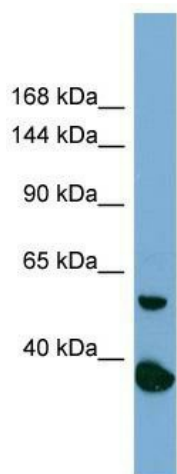
<b>Product Type:</b>	Primary Antibodies
<b>Applications:</b>	WB
<b>Recommended Dilution:</b>	WB
<b>Reactivity:</b>	Human
<b>Host:</b>	Rabbit
<b>Isotype:</b>	IgG
<b>Clonality:</b>	Polyclonal
<b>Immunogen:</b>	The immunogen for Anti-RAD50 Antibody is: synthetic peptide directed towards the N-terminal region of Human RAD50. Synthetic peptide located within the following region: SILGVRSEFGIEDKDKQIITFFSPLTILVGPNGAGKTTIIECLKYICTGDF
<b>Formulation:</b>	Liquid. Purified antibody supplied in 1x PBS buffer with 0.09% (w/v) sodium azide and 2% sucrose. <i>Note that this product is shipped as lyophilized powder to China customers.</i>
<b>Purification:</b>	Affinity Purified
<b>Conjugation:</b>	Unconjugated
<b>Storage:</b>	Store at -20°C as received.
<b>Stability:</b>	Stable for 12 months from date of receipt.
<b>Predicted Protein Size:</b>	60 kDa
<b>Gene Name:</b>	RAD50 double strand break repair protein
<b>Database Link:</b>	<a href="#">NP_005723</a> <a href="#">Entrez Gene 10111 Human Q92878</a>
<b>Background:</b>	The function of this protein remains unknown.
<b>Synonyms:</b>	hRad50; NBSLD; RAD502
<b>Note:</b>	Immunogen sequence homology: Dog: 100%; Pig: 100%; Rat: 100%; Horse: 100%; Human: 100%; Mouse: 100%; Bovine: 100%; Rabbit: 100%; Guinea pig: 100%; Zebrafish: 93%
<b>Protein Families:</b>	Druggable Genome



[View online »](#)

Protein Pathways: Homologous recombination, Non-homologous end-joining

### Product images:



Host: Rabbit; Target Name: RAD50; Sample  
Tissue: PANC1 Whole Cell lysates; Antibody  
Dilution: 1.0ug/ml