

Product datasheet for **TA332051**

Thioredoxin domain containing 9 (TXNDC9) Rabbit Polyclonal Antibody

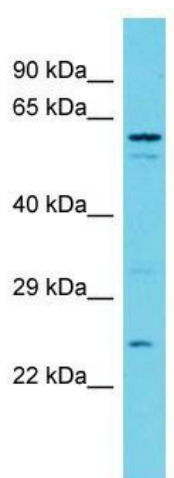
Product data:

Product Type:	Primary Antibodies
Applications:	WB
Recommended Dilution:	WB
Reactivity:	Human
Host:	Rabbit
Isotype:	IgG
Clonality:	Polyclonal
Immunogen:	The immunogen for Anti-TXNDC9 Antibody is: synthetic peptide directed towards the N-terminal region of Human TXNDC9. Synthetic peptide located within the following region: VDMFSKVLQHLQTTKLVEEHLQDSEIQKLDQMDDELRLKEKRLQALR
Formulation:	Liquid. Purified antibody supplied in 1x PBS buffer with 0.09% (w/v) sodium azide and 2% sucrose. <i>Note that this product is shipped as lyophilized powder to China customers.</i>
Conjugation:	Unconjugated
Storage:	Store at -20°C as received.
Stability:	Stable for 12 months from date of receipt.
Predicted Protein Size:	25 kDa
Gene Name:	thioredoxin domain containing 9
Database Link:	NP_005774 Entrez Gene 10190 Human O14530
Background:	The protein encoded by this gene is a member of the thioredoxin family. The exact function of this protein is not known but it is associated with cell differentiation.
Synonyms:	APACD; PHLP3
Note:	Immunogen sequence homology: Dog: 100%; Pig: 100%; Horse: 100%; Human: 100%; Bovine: 100%; Rabbit: 100%; Guinea pig: 100%; Rat: 93%; Zebrafish: 91%; Mouse: 79%
Protein Families:	Druggable Genome



[View online »](#)

Product images:



Host: Rabbit; Target Name: TXNDC9; Sample Tissue: MDA-MB-435S Whole Cell lysates; Antibody Dilution: 1.0ug/ml. TXNDC9 is strongly supported by BioGPS gene expression data to be expressed in Human MDA-MB435 cells