

Product datasheet for **TA332048**

PNMA1 Rabbit Polyclonal Antibody

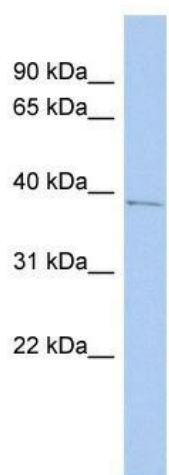
Product data:

Product Type:	Primary Antibodies
Applications:	WB
Recommended Dilution:	WB
Reactivity:	Human
Host:	Rabbit
Isotype:	IgG
Clonality:	Polyclonal
Immunogen:	The immunogen for Anti-PNMA1 Antibody: synthetic peptide directed towards the middle region of human PNMA1. Synthetic peptide located within the following region: LNTYQNPGEKLSAYVIRLEPLLQKVVEKGAIKDNVNQARLEQVIAGANH
Formulation:	Liquid. Purified antibody supplied in 1x PBS buffer with 0.09% (w/v) sodium azide and 2% sucrose. <i>Note that this product is shipped as lyophilized powder to China customers.</i>
Conjugation:	Unconjugated
Storage:	Store at -20°C as received.
Stability:	Stable for 12 months from date of receipt.
Predicted Protein Size:	40 kDa
Gene Name:	paraneoplastic Ma antigen 1
Database Link:	NP_006020 Entrez Gene 9240 Human Q8ND90
Background:	PNMA1 encodes a protein that is highly restricted to the brain and testis. Anti-PNMA1 reacts mainly with subnuclear elements (including the nucleoli) and to a lesser degree the cytoplasm.
Synonyms:	MA1
Note:	Immunogen sequence homology: Dog: 100%; Pig: 100%; Horse: 100%; Human: 100%; Bovine: 100%; Rabbit: 100%; Rat: 92%; Guinea pig: 92%; Mouse: 85%



[View online »](#)

Product images:



WB Suggested Anti-PNMA1 Antibody Titration:
0.2-1 ug/ml; ELISA Titer: 1: 312500; Positive
Control: HT1080 cell lysate PNMA1 is supported
by BioGPS gene expression data to be expressed
in HT1080