

Product datasheet for **TA332047**

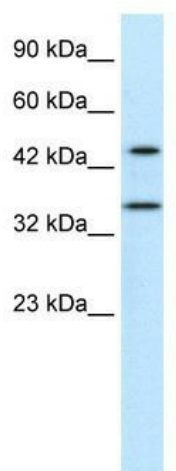
PNMA1 Rabbit Polyclonal Antibody

Product data:

Product Type:	Primary Antibodies
Applications:	WB
Recommended Dilution:	WB
Reactivity:	Human
Host:	Rabbit
Isotype:	IgG
Clonality:	Polyclonal
Immunogen:	The immunogen for Anti-PNMA1 Antibody: synthetic peptide directed towards the middle region of human PNMA1. Synthetic peptide located within the following region: KSNNPAITTAECLKALEQVFGSVESSRDAQIKFLNTYQNPGEKLSAYVIR
Formulation:	Liquid. Purified antibody supplied in 1x PBS buffer with 0.09% (w/v) sodium azide and 2% sucrose. <i>Note that this product is shipped as lyophilized powder to China customers.</i>
Conjugation:	Unconjugated
Storage:	Store at -20°C as received.
Stability:	Stable for 12 months from date of receipt.
Predicted Protein Size:	40 kDa
Gene Name:	paraneoplastic Ma antigen 1
Database Link:	NP_006020 Entrez Gene 9240 Human Q8ND90
Background:	PNMA1 encodes a protein that is highly restricted to the brain and testis. Anti-PNMA1 reacts mainly with subnuclear elements (including the nucleoli) and to a lesser degree the cytoplasm.
Synonyms:	MA1
Note:	Immunogen sequence homology: Human: 100%; Dog: 86%; Pig: 86%; Rat: 86%; Horse: 86%; Mouse: 86%; Rabbit: 86%; Guinea pig: 86%; Bovine: 79%



[View online »](#)

Product images:

WB Suggested Anti-PNMA1 Antibody Titration:
0.2-1 ug/ml; Positive Control: Jurkat cell lysate