

Product datasheet for **TA332045**

AGFG2 Rabbit Polyclonal Antibody

Product data:

Product Type:	Primary Antibodies
Applications:	WB
Recommended Dilution:	WB
Reactivity:	Human
Host:	Rabbit
Isotype:	IgG
Clonality:	Polyclonal
Immunogen:	The immunogen for Anti-AGFG2 Antibody is: synthetic peptide directed towards the N-terminal region of Human AGFG2. Synthetic peptide located within the following region: NEVCRKIWLGLFDARTSLVPDSRDPQKVKEFLQEKEYEKKRWYVPPDQVKG
Formulation:	Liquid. Purified antibody supplied in 1x PBS buffer with 0.09% (w/v) sodium azide and 2% sucrose. <i>Note that this product is shipped as lyophilized powder to China customers.</i>
Conjugation:	Unconjugated
Storage:	Store at -20°C as received.
Stability:	Stable for 12 months from date of receipt.
Predicted Protein Size:	53 kDa
Gene Name:	ArfGAP with FG repeats 2
Database Link:	NP_006067 Entrez Gene 3268 Human O95081
Background:	This gene is a member of the HIV-1 Rev binding protein (HRB) family and encodes a protein with one Arf-GAP zinc finger domain, several phe-gly (FG) motifs, and four asn-pro-phe (NPF) motifs. This protein interacts with Eps15 homology (EH) domains and plays a role in the Rev export pathway, which mediates the nucleocytoplasmic transfer of proteins and RNAs. Alternatively spliced transcript variants have been described, but their biological validity has not been determined. The 3' UTR of this gene contains an insulin receptor substrate 3-like pseudogene.

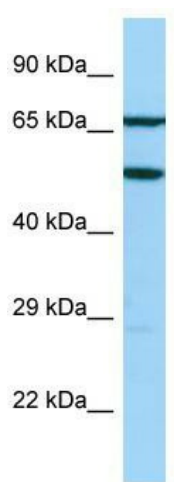


[View online »](#)

Synonyms: HRBL; RABR

Note: Immunogen sequence homology: Dog: 100%; Pig: 100%; Rat: 100%; Horse: 100%; Human: 100%; Mouse: 100%; Bovine: 100%; Rabbit: 100%; Zebrafish: 100%; Guinea pig: 100%

Product images:



Host: Rabbit; Target Name: AGFG2; Sample Tissue: Jurkat Whole Cell lysates; Antibody Dilution: 1.0ug/ml