

Product datasheet for **TA332040**

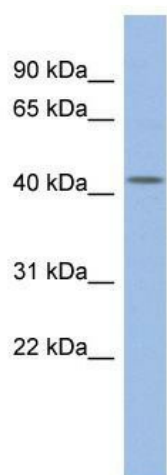
DPF2 Rabbit Polyclonal Antibody

Product data:

Product Type:	Primary Antibodies
Applications:	WB
Recommended Dilution:	WB
Reactivity:	Human
Host:	Rabbit
Isotype:	IgG
Clonality:	Polyclonal
Immunogen:	The immunogen for Anti-DPF2 Antibody: synthetic peptide directed towards the middle region of human DPF2. Synthetic peptide located within the following region: GKRYKNRPGLSYHYAHSHLAEEEGEDKEDSQPPTVPSQRSEEQSKKGGPD
Formulation:	Liquid. Purified antibody supplied in 1x PBS buffer with 0.09% (w/v) sodium azide and 2% sucrose. <i>Note that this product is shipped as lyophilized powder to China customers.</i>
Conjugation:	Unconjugated
Storage:	Store at -20°C as received.
Stability:	Stable for 12 months from date of receipt.
Predicted Protein Size:	44 kDa
Gene Name:	double PHD fingers 2
Database Link:	NP_006259 Entrez Gene 5977 Human Q92785
Background:	DPF2 may be a transcription factor required for the apoptosis response following survival factor withdrawal from myeloid cells. DPF2 might also have a role in the development and maturation of lymphoid cells.
Synonyms:	REQ; ubi-d4; UBID4
Note:	Immunogen sequence homology: Dog: 100%; Pig: 100%; Rat: 100%; Goat: 100%; Horse: 100%; Human: 100%; Bovine: 100%; Rabbit: 100%; Guinea pig: 100%; Mouse: 93%
Protein Families:	Druggable Genome, Transcription Factors



[View online »](#)

Product images:

WB Suggested Anti-DPF2 Antibody Titration: 0.2-1 ug/ml; ELISA Titer: 1: 62500; Positive Control: THP-1 cell lysate