

## Product datasheet for **TA332039**

### ZNF192 (ZKSCAN8) Rabbit Polyclonal Antibody

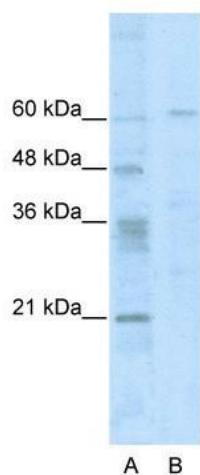
#### Product data:

Product Type:	Primary Antibodies
Applications:	WB
Recommended Dilution:	WB
Reactivity:	Human
Host:	Rabbit
Isotype:	IgG
Clonality:	Polyclonal
Immunogen:	The immunogen for Anti-ZNF192 Antibody: synthetic peptide directed towards the N terminal of human ZNF192. Synthetic peptide located within the following region: PSPPDQTPEEDLVIVKVEEDHGWDQESSLHESNPLGQEVFRLRFRQLRYQ
Formulation:	Liquid. Purified antibody supplied in 1x PBS buffer with 0.09% (w/v) sodium azide and 2% sucrose.
Conjugation:	Unconjugated
Storage:	Store at -20°C as received.
Stability:	Stable for 12 months from date of receipt.
Predicted Protein Size:	66 kDa
Gene Name:	zinc finger with KRAB and SCAN domains 8
Database Link:	<a href="#">NP_006289</a> <a href="#">Entrez Gene 7745 Human</a> <a href="#">Q15776</a>
Background:	ZNF192 belongs to the krueppel C2H2-type zinc-finger protein family and contains the conserved SCAN box domain. ZNF192 may be involved in transcriptional regulation.
Synonyms:	LD5-1; ZNF192; ZSCAN40
Note:	Immunogen sequence homology: Human: 100%; Dog: 79%; Pig: 79%; Goat: 79%; Horse: 79%; Bovine: 79%
Protein Families:	Transcription Factors



[View online »](#)

## Product images:



WB Suggested Anti-ZNF192 Antibody Titration:  
0.2-1 ug/ml; ELISA Titer: 1: 1562500; Positive  
Control: HepG2 cell lysate