

Product datasheet for **TA332038**

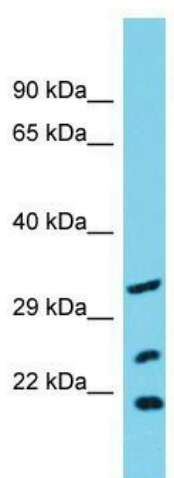
SLC25A17 Rabbit Polyclonal Antibody

Product data:

Product Type:	Primary Antibodies
Applications:	WB
Recommended Dilution:	WB
Reactivity:	Human
Host:	Rabbit
Isotype:	IgG
Clonality:	Polyclonal
Immunogen:	The immunogen for Anti-SLC25A17 Antibody is: synthetic peptide directed towards the N-terminal region of Human SLC25A17. Synthetic peptide located within the following region: APYRGWFPVISSLCCSNFVYFYTFNSLKALWVKGQHSTTGKDLVVGFBVAG
Formulation:	Liquid. Purified antibody supplied in 1x PBS buffer with 0.09% (w/v) sodium azide and 2% sucrose.
Conjugation:	Unconjugated
Storage:	Store at -20°C as received.
Stability:	Stable for 12 months from date of receipt.
Predicted Protein Size:	34 kDa
Gene Name:	solute carrier family 25 member 17
Database Link:	NP_006349 Entrez Gene 10478 Human O43808
Background:	This gene encodes a peroxisomal membrane protein that belongs to the family of mitochondrial solute carriers. It is expressed in the liver, and is likely involved in transport.
Synonyms:	PMP34
Note:	Immunogen sequence homology: Pig: 100%; Human: 100%; Sheep: 93%; Bovine: 93%; Rat: 92%; Dog: 86%; Horse: 86%; Rabbit: 86%; Mouse: 79%; Guinea pig: 79%
Protein Families:	Druggable Genome, Transmembrane



[View online »](#)

Product images:

Host: Rabbit; Target Name: SLC25A17; Sample Tissue: OVCAR-3 Whole Cell lysates; Antibody Dilution: 1.0ug/ml