

## Product datasheet for **TA332036**

### Influenza Virus NS1A Binding Protein (IVNS1ABP) Rabbit Polyclonal Antibody

#### Product data:

Product Type:	Primary Antibodies
Applications:	IHC, WB
Recommended Dilution:	WB, IHC
Reactivity:	Human
Host:	Rabbit
Isotype:	IgG
Clonality:	Polyclonal
Immunogen:	The immunogen for Anti-IVNS1ABP Antibody: synthetic peptide directed towards the N terminal of human IVNS1ABP. Synthetic peptide located within the following region: MIPNGYLMFEDENFIESSVAKLNALRKSGQFCDVRLQVCGHEMLAHRAVL
Formulation:	Liquid. Purified antibody supplied in 1x PBS buffer with 0.09% (w/v) sodium azide and 2% sucrose. <i>Note that this product is shipped as lyophilized powder to China customers.</i>
Conjugation:	Unconjugated
Storage:	Store at -20°C as received.
Stability:	Stable for 12 months from date of receipt.
Predicted Protein Size:	72 kDa
Gene Name:	influenza virus NS1A binding protein
Database Link:	<a href="#">NP_006460</a> <a href="#">Entrez Gene 10625 Human Q9Y6Y0</a>
Background:	IVNS1ABP is a novel human protein that interacts with the influenza A virus. Nonstructural NS1 protein is relocalized in the nuclei of infected cells.
Synonyms:	FLARA3; HSPC068; KLHL39; ND1; NS-1; NS1-BP; NS1BP
Note:	Immunogen sequence homology: Dog: 100%; Pig: 100%; Rat: 100%; Horse: 100%; Human: 100%; Mouse: 100%; Bovine: 100%; Rabbit: 100%; Guinea pig: 100%; Zebrafish: 77%
Protein Families:	Transcription Factors

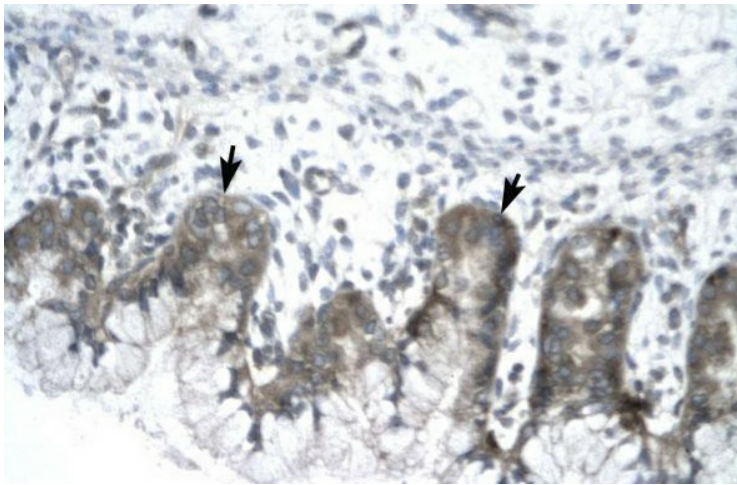


[View online »](#)

Product images:



WB Suggested Anti-IVNS1ABP Antibody Titration: 2.0ug/ml; Positive Control: HepG2 cell lysate



Human Stomach