

Product datasheet for **TA332033**

MAP4K5 Rabbit Polyclonal Antibody

Product data:

| | |
|-------------------------|--|
| Product Type: | Primary Antibodies |
| Applications: | WB |
| Recommended Dilution: | WB |
| Reactivity: | Human |
| Host: | Rabbit |
| Isotype: | IgG |
| Clonality: | Polyclonal |
| Immunogen: | The immunogen for Anti-MAP4K5 Antibody: synthetic peptide directed towards the middle region of human MAP4K5. Synthetic peptide located within the following region: QGKSFKSDEVTQEISDETRVFRLGSDRVVLESRPTENPTAHSNLYILA |
| Formulation: | Liquid. Purified antibody supplied in 1x PBS buffer with 0.09% (w/v) sodium azide and 2% sucrose. <i>Note that this product is shipped as lyophilized powder to China customers.</i> |
| Conjugation: | Unconjugated |
| Storage: | Store at -20°C as received. |
| Stability: | Stable for 12 months from date of receipt. |
| Predicted Protein Size: | 95 kDa |
| Gene Name: | mitogen-activated protein kinase kinase kinase kinase 5 |
| Database Link: | NP_006566 Entrez Gene 11183 Human Q9Y4K4 |
| Background: | MAP4K5 may play a role in the response to environmental stress. Appears to act upstream of the JUN N-terminal pathway. This gene encodes a member of the serine/threonine protein kinase family, that is highly similar to yeast SPS1/STE20 kinase. Yeast SPS1/STE20 functions near the beginning of the MAP kinase signal cascades that is essential for yeast pheromone response. This kinase was shown to activate Jun kinase in mammalian cells, which suggested a role in stress response. Two alternatively spliced transcript variants encoding the same protein have been described for this gene. |



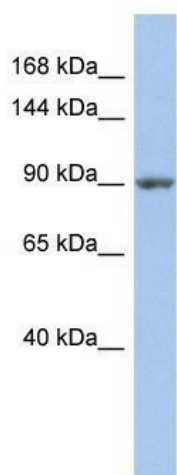
[View online »](#)

Synonyms: GCKR; KHS; KHS1; MAPK5

Note: Immunogen sequence homology: Dog: 100%; Pig: 100%; Rat: 100%; Horse: 100%; Human: 100%; Mouse: 100%; Bovine: 100%; Rabbit: 100%; Guinea pig: 100%; Zebrafish: 86%; Yeast: 77%

Protein Families: Druggable Genome, Protein Kinase

Product images:



WB Suggested Anti-MAP4K5 Antibody Titration:
0.2-1 ug/ml; ELISA Titer: 1: 62500; Positive
Control: PANC1 cell lysate