

Product datasheet for **TA332032**

AP4B1 Rabbit Polyclonal Antibody

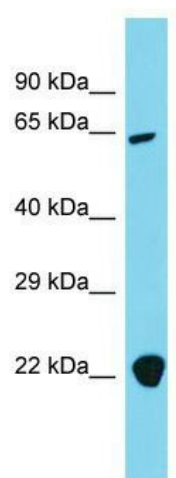
Product data:

Product Type:	Primary Antibodies
Applications:	WB
Recommended Dilution:	WB
Reactivity:	Human
Host:	Rabbit
Isotype:	IgG
Clonality:	Polyclonal
Immunogen:	The immunogen for Anti-AP4B1 Antibody is: synthetic peptide directed towards the C-terminal region of Human AP4B1. Synthetic peptide located within the following region: GAERCDPELPKTSSFAASGPLIPEENKERVQELPDSGALMLVPNRQLTAD
Formulation:	Liquid. Purified antibody supplied in 1x PBS buffer with 0.09% (w/v) sodium azide and 2% sucrose. <i>Note that this product is shipped as lyophilized powder to China customers.</i>
Conjugation:	Unconjugated
Storage:	Store at -20°C as received.
Stability:	Stable for 12 months from date of receipt.
Predicted Protein Size:	62 kDa
Gene Name:	adaptor related protein complex 4 beta 1 subunit
Database Link:	NP_006585 Entrez Gene 10717 Human Q9Y6B7
Background:	The function of this protein remains unknown.
Synonyms:	BETA-4; CPSQ5; SPG47
Note:	Immunogen sequence homology: Human: 100%; Horse: 93%; Bovine: 93%; Dog: 86%; Pig: 86%; Rat: 86%; Guinea pig: 86%; Rabbit: 79%
Protein Pathways:	Lysosome



[View online »](#)

Product images:



Host: Rabbit; Target Name: AP4B1; Sample
Tissue: 293T Whole Cell lysates; Antibody
Dilution: 1.0ug/ml