

Product datasheet for **TA332031**

AHCYL1 Rabbit Polyclonal Antibody

Product data:

| | |
|-------------------------|--|
| Product Type: | Primary Antibodies |
| Applications: | WB |
| Recommended Dilution: | WB |
| Reactivity: | Human |
| Host: | Rabbit |
| Isotype: | IgG |
| Clonality: | Polyclonal |
| Immunogen: | The immunogen for Anti-AHCYL1 Antibody: synthetic peptide directed towards the N terminal of human AHCYL1. Synthetic peptide located within the following region: MSMPDAMPLPGVGEELKQAKEIEDAEKYSFMATVTKAPKKQIQFADDMQE |
| Formulation: | Liquid. Purified antibody supplied in 1x PBS buffer with 0.09% (w/v) sodium azide and 2% sucrose. <i>Note that this product is shipped as lyophilized powder to China customers.</i> |
| Conjugation: | Unconjugated |
| Storage: | Store at -20°C as received. |
| Stability: | Stable for 12 months from date of receipt. |
| Predicted Protein Size: | 59 kDa |
| Gene Name: | adenosylhomocysteinase like 1 |
| Database Link: | NP_006612 Entrez Gene 10768 Human O43865 |
| Background: | AHCYL1 belongs to the adenosylhomocysteinase family. The protein, an inositol 1,4,5-trisphosphate receptor-binding protein, specifically binds to and activates pancreas-type Na ⁺ /HCO ₃ ⁻ cotransporter 1 (pNBC1). The regulation through AHCYL1 enables NBC1 variants to have different physiological roles. |
| Synonyms: | DCAL; IRBIT; PPP1R78; PRO0233; XPVKONA |
| Note: | Immunogen sequence homology: Pig: 100%; Rat: 100%; Horse: 100%; Human: 100%; Mouse: 100%; Bovine: 100%; Rabbit: 100%; Guinea pig: 100% |

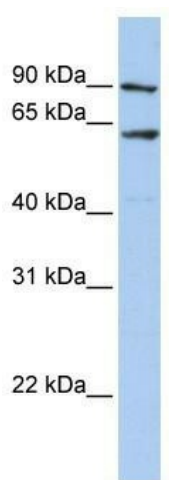


[View online »](#)

Protein Families: Druggable Genome

Protein Pathways: Cysteine and methionine metabolism, Metabolic pathways, Selenoamino acid metabolism

Product images:



WB Suggested Anti-AHCYL1 Antibody Titration:
0.2-1 ug/ml; ELISA Titer: 1: 1562500; Positive
Control: Human Placenta