

Product datasheet for **TA332030**

AHCYL1 Rabbit Polyclonal Antibody

Product data:

Product Type:	Primary Antibodies
Applications:	WB
Recommended Dilution:	WB
Reactivity:	Human
Host:	Rabbit
Isotype:	IgG
Clonality:	Polyclonal
Immunogen:	The immunogen for Anti-AHCYL1 Antibody: synthetic peptide directed towards the N terminal of human AHCYL1. Synthetic peptide located within the following region: TDSYSSAASYTDSSDDEVSPREKQQTNSKGSNFCVKNIKQAEFGREIE
Formulation:	Liquid. Purified antibody supplied in 1x PBS buffer with 0.09% (w/v) sodium azide and 2% sucrose. <i>Note that this product is shipped as lyophilized powder to China customers.</i>
Conjugation:	Unconjugated
Storage:	Store at -20°C as received.
Stability:	Stable for 12 months from date of receipt.
Predicted Protein Size:	59 kDa
Gene Name:	adenosylhomocysteinase like 1
Database Link:	NP_006612 Entrez Gene 10768 Human O43865
Background:	AHCYL1 belongs to the adenosylhomocysteinase family. The protein, an inositol 1,4,5-trisphosphate receptor-binding protein, specifically binds to and activates pancreas-type Na ⁺ /HCO ₃ ⁻ cotransporter 1 (pNBC1). The regulation through AHCYL1 enables NBC1 variants to have different physiological roles.
Synonyms:	DCAL; IRBIT; PPP1R78; PRO0233; XPVKONA
Note:	Immunogen sequence homology: Dog: 100%; Pig: 100%; Rat: 100%; Horse: 100%; Human: 100%; Mouse: 100%; Bovine: 100%; Rabbit: 100%; Guinea pig: 100%; Zebrafish: 79%

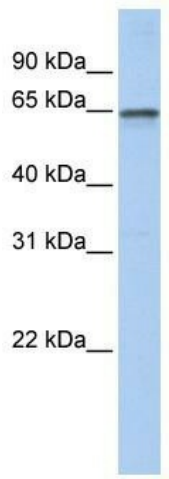


[View online »](#)

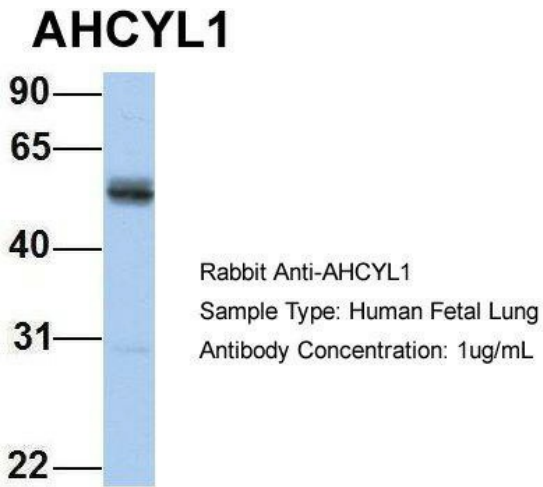
Protein Families: Druggable Genome

Protein Pathways: Cysteine and methionine metabolism, Metabolic pathways, Selenoamino acid metabolism

Product images:



WB Suggested Anti-AHCYL1 Antibody Titration:
0.2-1 ug/ml; ELISA Titer: 1: 32500; Positive
Control: Human brain



Host: Rabbit; Target Name: AHCYL1; Sample
Tissue: Human Fetal Lung; Antibody Dilution:
1.0ug/ml

