

Product datasheet for **TA332028**

ENTR1 Rabbit Polyclonal Antibody

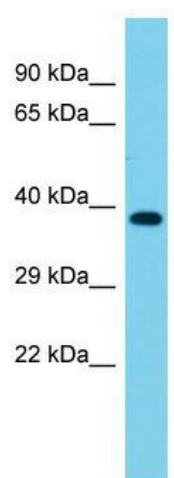
Product data:

Product Type:	Primary Antibodies
Applications:	WB
Recommended Dilution:	WB
Reactivity:	Human
Host:	Rabbit
Isotype:	IgG
Clonality:	Polyclonal
Immunogen:	The immunogen for Anti-SDCCAG3 Antibody is: synthetic peptide directed towards the C-terminal region of Human SDCCAG3. Synthetic peptide located within the following region: PAGSPSADFAVHGESLGDRHLRTLQISYDALKDENSKLRRKLNEVQSFSE
Formulation:	Liquid. Purified antibody supplied in 1x PBS buffer with 0.09% (w/v) sodium azide and 2% sucrose. <i>Note that this product is shipped as lyophilized powder to China customers.</i>
Conjugation:	Unconjugated
Storage:	Store at -20°C as received.
Stability:	Stable for 12 months from date of receipt.
Predicted Protein Size:	39 kDa
Gene Name:	serologically defined colon cancer antigen 3
Database Link:	NP_006634 Entrez Gene 10807 Human Q96C92
Background:	SDCCAG3 may be involved in modulation of TNF response and may be involved in presentation of TNFRSF1A on the cell surface.
Synonyms:	NY-CO-3
Note:	Immunogen sequence homology: Horse: 100%; Human: 100%; Rabbit: 100%; Dog: 93%; Pig: 93%; Rat: 93%; Mouse: 93%; Bovine: 93%; Guinea pig: 93%



[View online »](#)

Product images:



Host: Rabbit; Target Name: SDCCAG3; Sample
Tissue: Fetal Heart lysates; Antibody Dilution:
1.0ug/ml