

Product datasheet for **TA332026**

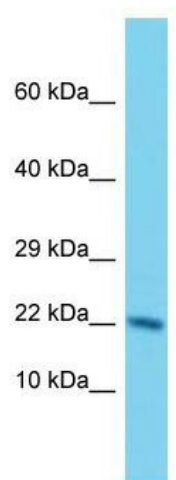
NUDT3 Rabbit Polyclonal Antibody

Product data:

Product Type:	Primary Antibodies
Applications:	WB
Recommended Dilution:	WB
Reactivity:	Human
Host:	Rabbit
Isotype:	IgG
Clonality:	Polyclonal
Immunogen:	The immunogen for Anti-NUDT3 Antibody is: synthetic peptide directed towards the middle region of Human NUDT3. Synthetic peptide located within the following region: VKGTLGRLVGIFENQERKHRTYVYVLIVTEVLEDWEDSVNIGRKREWFKI
Formulation:	Liquid. Purified antibody supplied in 1x PBS buffer with 0.09% (w/v) sodium azide and 2% sucrose.
Conjugation:	Unconjugated
Storage:	Store at -20°C as received.
Stability:	Stable for 12 months from date of receipt.
Predicted Protein Size:	19 kDa
Gene Name:	nudix hydrolase 3
Database Link:	NP_006694 Entrez Gene 11165 Human O95989
Background:	NUDT3 belongs to the MutT, or Nudix, protein family. Nudix proteins act as homeostatic checkpoints at important stages in nucleoside phosphate metabolic pathways, guarding against elevated levels of potentially dangerous intermediates, like 8-oxo-dGTP, which promotes AT-to-CG transversions.
Synonyms:	DIPP; DIPP-1; DIPP1
Note:	Immunogen sequence homology: Dog: 100%; Pig: 100%; Rat: 100%; Horse: 100%; Human: 100%; Mouse: 100%; Bovine: 100%; Rabbit: 100%; Guinea pig: 100%; Zebrafish: 86%



[View online »](#)

Product images:

Host: Rabbit; Target Name: NUDT3; Sample Tissue: HeLa Whole Cell lysates; Antibody Dilution: 1.0ug/ml. NUDT3 is supported by BioGPS gene expression data to be expressed in HeLa