

Product datasheet for **TA332024**

Keratin 38 (KRT38) Rabbit Polyclonal Antibody

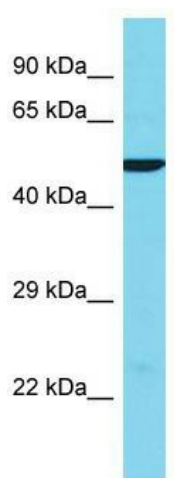
Product data:

Product Type:	Primary Antibodies
Applications:	WB
Recommended Dilution:	WB
Reactivity:	Human
Host:	Rabbit
Isotype:	IgG
Clonality:	Polyclonal
Immunogen:	The immunogen for Anti-KRT38 Antibody is: synthetic peptide directed towards the middle region of Human KRT38. Synthetic peptide located within the following region: DKCGTQKLLDDATLAKADLEAQQESLKEEQLSLKSNHEQEVKILRSQLGE
Formulation:	Liquid. Purified antibody supplied in 1x PBS buffer with 0.09% (w/v) sodium azide and 2% sucrose.
Conjugation:	Unconjugated
Storage:	Store at -20°C as received.
Stability:	Stable for 12 months from date of receipt.
Predicted Protein Size:	50 kDa
Gene Name:	keratin 38
Database Link:	NP_006762 Entrez Gene 8687 Human O76015
Background:	The protein encoded by this gene is a member of the keratin gene family. As a type I hair keratin, it is an acidic protein which heterodimerizes with type II keratins to form hair and nails. The type I hair keratins are clustered in a region of chromosome 17q12-q21 and have the same direction of transcription.
Synonyms:	HA8; hHa8; KRTHA8
Note:	Immunogen sequence homology: Human: 100%; Rabbit: 100%; Sheep: 92%; Bovine: 92%; Dog: 85%; Horse: 85%; Pig: 77%; Rat: 77%



[View online »](#)

Product images:



Host: Rabbit; Target Name: KRT38; Sample
Tissue: Hela Whole Cell lysates; Antibody Dilution:
1.0ug/ml