

## Product datasheet for **TA332022**

### GPR75 Rabbit Polyclonal Antibody

#### Product data:

Product Type:	Primary Antibodies
Applications:	WB
Recommended Dilution:	WB
Reactivity:	Human
Host:	Rabbit
Isotype:	IgG
Clonality:	Polyclonal
Immunogen:	The immunogen for Anti-GPR75 Antibody: synthetic peptide directed towards the middle region of human GPR75. Synthetic peptide located within the following region: GQSSSTPINTRIEPYYSIYNSSPSQEESSPCNLQPVNSFGFANSYIAMHY
Formulation:	Liquid. Purified antibody supplied in 1x PBS buffer with 0.09% (w/v) sodium azide and 2% sucrose. <i>Note that this product is shipped as lyophilized powder to China customers.</i>
Conjugation:	Unconjugated
Storage:	Store at -20°C as received.
Stability:	Stable for 12 months from date of receipt.
Predicted Protein Size:	59 kDa
Gene Name:	G protein-coupled receptor 75
Database Link:	<a href="#">NP_006785</a> <a href="#">Entrez Gene 10936 Human O95800</a>
Background:	GPR75 is a member of the G protein-coupled receptor family. GPRs are cell surface receptors that activate guanine-nucleotide binding proteins upon the binding of a ligand. GPR75 is a member of the G protein-coupled receptor family. GPRs are cell surface receptors that activate guanine-nucleotide binding proteins upon the binding of a ligand. [supplied by OMIM]. PRIMARYREFSEQ_SPAN PRIMARY_IDENTIFIER PRIMARY_SPAN COMP 1-1894 AK314885.1 1-1894 1895-2115 AF072693.1 1834-2054
Synonyms:	GPRchr2; WI31133



[View online »](#)

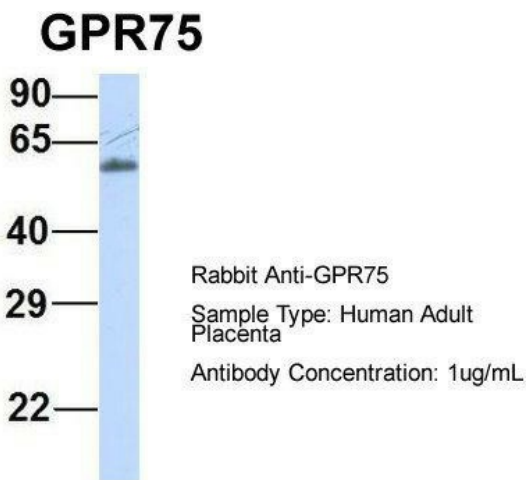
**Note:** Immunogen sequence homology: Pig: 100%; Rat: 100%; Horse: 100%; Human: 100%; Mouse: 100%; Bovine: 100%; Rabbit: 100%; Zebrafish: 100%

**Protein Families:** Druggable Genome, GPCR, Transmembrane

**Product images:**

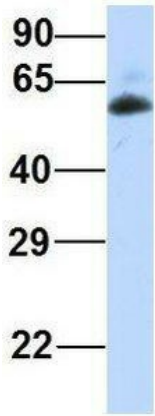


WB Suggested Anti-GPR75 Antibody Titration: 0.2-1 ug/ml; ELISA Titer: 1: 62500; Positive Control: HepG2 cell lysate



Host: Rabbit; Target Name: GPR75; Sample Tissue: Human Adult Placenta; Antibody Dilution: 1.0ug/ml

## GPR75



Rabbit Anti-GPR75  
Sample Type: Human Fetal Muscle  
Antibody Concentration: 1ug/mL

Host: Rabbit; Target Name: GPR75; Sample Tissue: Human Fetal Muscle; Antibody Dilution: 1.0ug/ml