

Product datasheet for **TA332020**

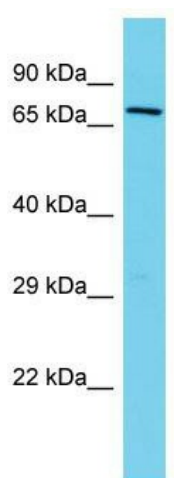
Kindlin 2 (FERMT2) Rabbit Polyclonal Antibody

Product data:

Product Type:	Primary Antibodies
Applications:	WB
Recommended Dilution:	WB
Reactivity:	Human
Host:	Rabbit
Isotype:	IgG
Clonality:	Polyclonal
Immunogen:	The immunogen for Anti-FERMT2 Antibody is: synthetic peptide directed towards the C-terminal region of Human FERMT2. Synthetic peptide located within the following region: TSISCYKSKEESSGTPAHQMNLRGCEVTPDVNISGQKFNKLLIPVAEGM
Formulation:	Liquid. Purified antibody supplied in 1x PBS buffer with 0.09% (w/v) sodium azide and 2% sucrose. <i>Note that this product is shipped as lyophilized powder to China customers.</i>
Conjugation:	Unconjugated
Storage:	Store at -20°C as received.
Stability:	Stable for 12 months from date of receipt.
Predicted Protein Size:	75 kDa
Gene Name:	fermitin family member 2
Database Link:	NP_006823 Entrez Gene 10979 Human Q96AC1
Background:	FERMT2 participates in the connection between ECM adhesion sites and the actin cytoskeleton and also in the orchestration of actin assembly and cell shape modulation. It recruits migfilin (FBLP1) protein to cell-ECM focal adhesion sites.
Synonyms:	KIND2; mig-2; MIG2; PLEKHC1; UNC112; UNC112B
Note:	Immunogen sequence homology: Dog: 100%; Pig: 100%; Rat: 100%; Horse: 100%; Human: 100%; Bovine: 100%; Rabbit: 100%; Mouse: 93%; Guinea pig: 93%; Zebrafish: 79%



[View online »](#)

Product images:

Host: Rabbit; Target Name: FERMT2; Sample Tissue: HT1080 Whole Cell lysates; Antibody Dilution: 1.0ug/ml. FERMT2 is strongly supported by BioGPS gene expression data to be expressed in Human HT1080 cells