

## Product datasheet for **TA332018**

### SOX30 Rabbit Polyclonal Antibody

#### Product data:

Product Type:	Primary Antibodies
Applications:	WB
Recommended Dilution:	WB
Reactivity:	Human
Host:	Rabbit
Isotype:	IgG
Clonality:	Polyclonal
Immunogen:	The immunogen for Anti-SOX30 Antibody: synthetic peptide directed towards the middle region of human SOX30. Synthetic peptide located within the following region: GDEKGGLEAEV MRDSMQGGAGKSPAAIREGVKTEEPERLLEDCLGAE
Formulation:	Liquid. Purified antibody supplied in 1x PBS buffer with 0.09% (w/v) sodium azide and 2% sucrose. <i>Note that this product is shipped as lyophilized powder to China customers.</i>
Conjugation:	Unconjugated
Storage:	Store at -20°C as received.
Stability:	Stable for 12 months from date of receipt.
Predicted Protein Size:	54 kDa
Gene Name:	SRY-box 30
Database Link:	<a href="#">NP_008948</a> <a href="#">Entrez Gene 11063 Human</a> <a href="#">O94993</a>



[View online »](#)

**Background:**

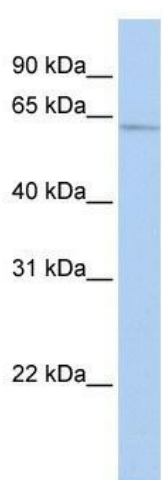
The SOX30 gene encodes a member of the SOX (SRY-related HMG-box) family of transcription factors involved in the regulation of embryonic development and in the determination of the cell fate. The encoded protein may act as a transcriptional regulator after forming a protein complex with other proteins. The protein may be involved in the differentiation of developing male germ cells. This gene encodes a member of the SOX (SRY-related HMG-box) family of transcription factors involved in the regulation of embryonic development and in the determination of the cell fate. The encoded protein may act as a transcriptional regulator after forming a protein complex with other proteins. The protein may be involved in the differentiation of developing male germ cells. Two transcript variants encoding distinct isoforms have been identified for this gene.

**Synonyms:**

Sox30 protein type II; SRY (sex determining region Y)-box 30

**Note:**

Immunogen sequence homology: Human: 100%; Pig: 86%; Dog: 79%

**Product images:**

WB Suggested Anti-SOX30 Antibody Titration: 0.2-1 ug/ml; ELISA Titer: 1: 312500; Positive Control: HepG2 cell lysate