

Product datasheet for **TA332017**

LXR beta (NR1H2) Rabbit Polyclonal Antibody

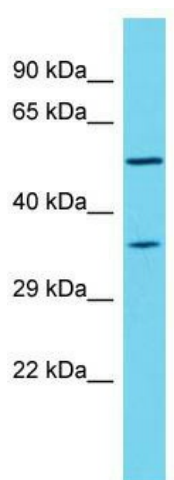
Product data:

Product Type:	Primary Antibodies
Applications:	WB
Recommended Dilution:	WB
Reactivity:	Rat
Host:	Rabbit
Isotype:	IgG
Clonality:	Polyclonal
Immunogen:	The immunogen for Anti-Nr1h2 Antibody is: synthetic peptide directed towards the N-terminal region of Rat Nr1h2. Synthetic peptide located within the following region: ASGFHYNVLSCEGCKGFFRRSVVHGGAGRYACRGSBTCQMDAFMRRKCQL
Formulation:	Liquid. Purified antibody supplied in 1x PBS buffer with 0.09% (w/v) sodium azide and 2% sucrose. <i>Note that this product is shipped as lyophilized powder to China customers.</i>
Conjugation:	Unconjugated
Storage:	Store at -20°C as received.
Stability:	Stable for 12 months from date of receipt.
Predicted Protein Size:	48 kDa
Gene Name:	nuclear receptor subfamily 1 group H member 2
Database Link:	NP_009052 Entrez Gene 58851 Rat P55055
Background:	Nr1h2 is a nuclear orphan receptor; It may be involved in modulating 9-cis-retinoic acid signaling by interacting with retinoic acid receptor (RXR).
Synonyms:	LXR-b; LXRB; NER; NER-I; RIP15; UNR
Note:	Immunogen sequence homology: Rat: 100%; Mouse: 100%; Rabbit: 100%; Dog: 93%; Pig: 93%; Horse: 93%; Human: 93%; Bovine: 93%; Guinea pig: 86%
Protein Families:	Druggable Genome, Nuclear Hormone Receptor, Transcription Factors



[View online »](#)

Product images:



Host: Rabbit; Target Name: Nr1h2; Sample
Tissue: Rat Thymus lysates; Antibody Dilution:
1.0ug/ml