

Product datasheet for **TA332014**

ABCB8 Rabbit Polyclonal Antibody

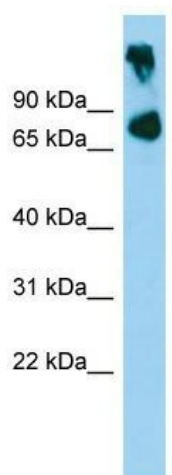
Product data:

Product Type:	Primary Antibodies
Applications:	WB
Recommended Dilution:	WB
Reactivity:	Mouse
Host:	Rabbit
Isotype:	IgG
Clonality:	Polyclonal
Immunogen:	The immunogen for Anti-Abcb8 Antibody is: synthetic peptide directed towards the middle region of Mouse Abcb8. Synthetic peptide located within the following region: ADEALGNVRTVRAFAMEKREEERYQAELESCCCKAEELGRGIALFQGLSN
Formulation:	Liquid. Purified antibody supplied in 1x PBS buffer with 0.09% (w/v) sodium azide and 2% sucrose. <i>Note that this product is shipped as lyophilized powder to China customers.</i>
Conjugation:	Unconjugated
Storage:	Store at -20°C as received.
Stability:	Stable for 12 months from date of receipt.
Predicted Protein Size:	78 kDa
Gene Name:	ATP binding cassette subfamily B member 8
Database Link:	NP_009119 Entrez Gene 74610 Mouse Q9NUT2
Background:	The function of this protein remains unknown.
Synonyms:	EST328128; M-ABC1; MABC1
Note:	Immunogen sequence homology: Dog: 100%; Pig: 100%; Rat: 100%; Horse: 100%; Human: 100%; Mouse: 100%; Bovine: 100%; Rabbit: 100%; Guinea pig: 100%; Zebrafish: 85%
Protein Families:	Druggable Genome, Transmembrane
Protein Pathways:	ABC transporters



[View online »](#)

Product images:



WB Suggested Anti-Abcb8 Antibody; Titration: 1.0 ug/ml; Positive Control: Mouse Muscle