

Product datasheet for **TA332011**

GPR45 Rabbit Polyclonal Antibody

Product data:

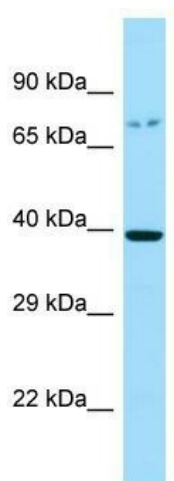
Product Type:	Primary Antibodies
Applications:	WB
Recommended Dilution:	WB
Reactivity:	Human
Host:	Rabbit
Isotype:	IgG
Clonality:	Polyclonal
Immunogen:	The immunogen for Anti-GPR45 Antibody is: synthetic peptide directed towards the C-terminal region of Human GPR45. Synthetic peptide located within the following region: YVVTLLVAVFFAPFGVMLCAYMCILNTRKNAVRVHNQSDSLDLRQLTRA
Formulation:	Liquid. Purified antibody supplied in 1x PBS buffer with 0.09% (w/v) sodium azide and 2% sucrose. <i>Note that this product is shipped as lyophilized powder to China customers.</i>
Conjugation:	Unconjugated
Storage:	Store at -20°C as received.
Stability:	Stable for 12 months from date of receipt.
Predicted Protein Size:	41 kDa
Gene Name:	G protein-coupled receptor 45
Database Link:	NP_009158 Entrez Gene 11250 Human Q9Y5Y3
Background:	This intronless gene encodes a member of the G protein-coupled receptor (GPCR) family. Members of this protein family contain seven putative transmembrane domains and may mediate signaling processes to the interior of the cell via activation of heterotrimeric G proteins. This protein may function in the central nervous system.
Synonyms:	PSP24; PSP24(ALPHA); PSP24A
Note:	Immunogen sequence homology: Dog: 100%; Pig: 100%; Rat: 100%; Horse: 100%; Human: 100%; Mouse: 100%; Guinea pig: 100%; Rabbit: 93%; Bovine: 79%



[View online »](#)

Protein Families: Druggable Genome, GPCR, Transmembrane

Product images:



Host: Rabbit; Target Name: GPR45; Sample Tissue: RPMI-8226 Whole Cell lysates; Antibody Dilution: 1.0ug/ml; GPR45 is supported by BioGPS gene expression data to be expressed in RPMI 8226