

Product datasheet for **TA332007**

KLF8 Rabbit Polyclonal Antibody

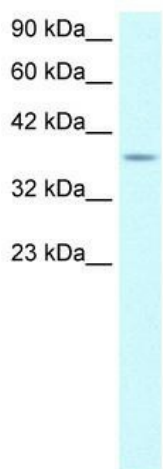
Product data:

Product Type:	Primary Antibodies
Applications:	WB
Recommended Dilution:	WB
Reactivity:	Human, Mouse
Host:	Rabbit
Isotype:	IgG
Clonality:	Polyclonal
Immunogen:	The immunogen for Anti-KLF8 Antibody: synthetic peptide directed towards the middle region of human KLF8. Synthetic peptide located within the following region: LEIPSDSEESTIESGSSALQSLQGLQQEPAAMAQMGGESLDLKRRIHQ
Formulation:	Liquid. Purified antibody supplied in 1x PBS buffer with 0.09% (w/v) sodium azide and 2% sucrose. <i>Note that this product is shipped as lyophilized powder to China customers.</i>
Conjugation:	Unconjugated
Storage:	Store at -20°C as received.
Stability:	Stable for 12 months from date of receipt.
Predicted Protein Size:	39 kDa
Gene Name:	Kruppel-like factor 8
Database Link:	NP_009181 Entrez Gene 245671 Mouse Entrez Gene 11279 Human O95600
Background:	KLF8 is abnormally expressed in female patients with X autosome translocation t(X;21) (p11.2;q22.3) and non-syndromic mental retardation.
Synonyms:	BKLF3; ZNF741
Note:	Immunogen sequence homology: Dog: 100%; Human: 100%; Rat: 93%; Mouse: 93%; Rabbit: 93%; Pig: 86%; Guinea pig: 86%; Horse: 83%
Protein Families:	Transcription Factors

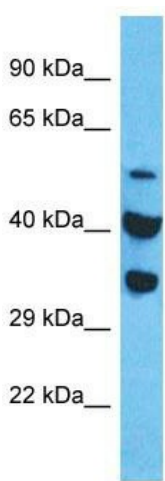


[View online »](#)

Product images:



WB Suggested Anti-KLF8 Antibody Titration: 0.2-1 ug/ml; Positive Control: HepG2 cell lysate



Host: Rabbit
 Target Name: KLF8
 Sample Tissue: HepG2 Cell Lysate
 Antibody Dilution: 1.0µg/ml

Host: Rabbit; Target Name: KLF8; Sample Tissue: HepG2 Whole Cell lysates; Antibody Dilution: 1.0ug/ml