

## Product datasheet for **TA332006**

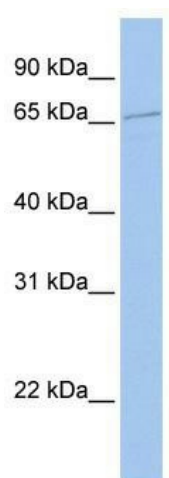
### SGT1 (ECD) Rabbit Polyclonal Antibody

#### Product data:

Product Type:	Primary Antibodies
Applications:	WB
Recommended Dilution:	WB
Reactivity:	Human
Host:	Rabbit
Isotype:	IgG
Clonality:	Polyclonal
Immunogen:	The immunogen for Anti-ECD Antibody: synthetic peptide directed towards the N terminal of human ECD. Synthetic peptide located within the following region: PAHMFVGTKFGDNIEDWFIYVIKQITKEFPELVARIEDNDGEFLLIEA
Formulation:	Liquid. Purified antibody supplied in 1x PBS buffer with 0.09% (w/v) sodium azide and 2% sucrose. <i>Note that this product is shipped as lyophilized powder to China customers.</i>
Purification:	Affinity Purified
Conjugation:	Unconjugated
Storage:	Store at -20°C as received.
Stability:	Stable for 12 months from date of receipt.
Predicted Protein Size:	73 kDa
Gene Name:	ecdysoneless cell cycle regulator
Database Link:	<a href="#">NP_009196</a> <a href="#">Entrez Gene 11319 Human O95905</a>
Background:	The exact function of ECD remains unknown.
Synonyms:	GCR2; HSGT1; SGT1
Note:	Immunogen sequence homology: Dog: 100%; Pig: 100%; Goat: 100%; Horse: 100%; Human: 100%; Bovine: 100%; Rabbit: 100%; Guinea pig: 100%; Rat: 93%; Mouse: 93%
Protein Families:	Druggable Genome, Transcription Factors



[View online »](#)

**Product images:**

WB Suggested Anti-ECD Antibody Titration: 0.2-1 ug/ml; ELISA Titer: 1: 312500; Positive Control: Jurkat cell lysate