

## Product datasheet for **TA332004**

### Nr0b1 Rabbit Polyclonal Antibody

#### Product data:

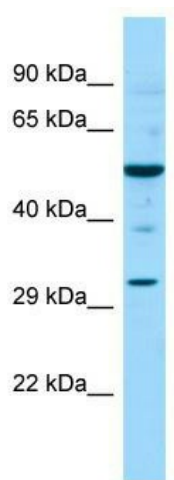
Product Type:	Primary Antibodies
Applications:	WB
Recommended Dilution:	WB
Reactivity:	Mouse
Host:	Rabbit
Isotype:	IgG
Clonality:	Polyclonal
Immunogen:	The immunogen for Anti-Nr0b1 Antibody is: synthetic peptide directed towards the C-terminal region of Mouse Nr0b1. Synthetic peptide located within the following region: YIEGLQWRTQQILTEHIRMMQREYQIRSAELNSALFLLRFINSDDVTELF
Formulation:	Liquid. Purified antibody supplied in 1x PBS buffer with 0.09% (w/v) sodium azide and 2% sucrose. <i>Note that this product is shipped as lyophilized powder to China customers.</i>
Conjugation:	Unconjugated
Storage:	Store at -20°C as received.
Stability:	Stable for 12 months from date of receipt.
Predicted Protein Size:	52 kDa
Gene Name:	nuclear receptor subfamily 0, group B, member 1
Database Link:	<a href="#">NP_031456</a> <a href="#">Entrez Gene 11614 Mouse</a> <a href="#">Q61066</a>
Background:	Nr0b1 is an orphan nuclear receptor and a component of a cascade required for the development of the hypothalamic-pituitary-adrenal-gonadal axis. Nr0b1 acts as a coregulatory protein that inhibits the transcriptional activity of other nuclear receptors through heterodimeric interactions. Nr0b1 may also have a role in the development of the embryo and in the maintenance of embryonic stem cell pluripotency.
Synonyms:	AHC; AHCH; AHX; DAX-1; DAX1; DSS; GTD; HHG; NROB1



[View online »](#)

**Note:** Immunogen sequence homology: Human: 100%; Pig: 92%; Rat: 92%; Mouse: 92%; Bovine: 92%; Rabbit: 92%; Guinea pig: 92%; Horse: 83%; Dog: 75%

**Product images:**



WB Suggested Anti-Nr0b1 Antibody; Titration: 1.0 ug/ml; Positive Control: Mouse Testis