

## Product datasheet for **TA332003**

### Eps15l1 Rabbit Polyclonal Antibody

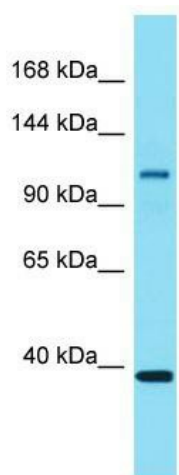
#### Product data:

Product Type:	Primary Antibodies
Applications:	WB
Recommended Dilution:	WB
Reactivity:	Mouse
Host:	Rabbit
Isotype:	IgG
Clonality:	Polyclonal
Immunogen:	The immunogen for Anti-Eps15l1 Antibody is: synthetic peptide directed towards the C-terminal region of Mouse Eps15l1. Synthetic peptide located within the following region: PFGGDPFKESDPFHSSSSDDFFKKQTKNDPFTSDPFTKNPSLPSKLDPFE
Formulation:	Liquid. Purified antibody supplied in 1x PBS buffer with 0.09% (w/v) sodium azide and 2% sucrose. <i>Note that this product is shipped as lyophilized powder to China customers.</i>
Conjugation:	Unconjugated
Storage:	Store at -20°C as received.
Stability:	Stable for 12 months from date of receipt.
Predicted Protein Size:	100 kDa
Gene Name:	epidermal growth factor receptor pathway substrate 15-like 1
Database Link:	<a href="#">NP_031970</a> <a href="#">Entrez Gene 13859 Mouse</a> <a href="#">Q60902</a>
Background:	Eps15l1 seems to be a constitutive component of clathrin-coated pits that is required for receptor-mediated endocytosis. It is involved in endocytosis of integrin beta-1 (ITGB1) and transferrin receptor (TFR); internalization of ITGB1 as DAB2-dependent cargo but not TFR seems to require association with DAB2.
Synonyms:	EPS15R
Note:	Immunogen sequence homology: Dog: 100%; Rat: 100%; Horse: 100%; Human: 100%; Mouse: 100%; Bovine: 93%; Pig: 86%; Guinea pig: 86%



[View online »](#)

## Product images:



Host: Rabbit; Target Name: Eps15l1; Sample  
Tissue: Mouse Spleen lysates; Antibody Dilution:  
1.0ug/ml