

Product datasheet for **TA332002**

Prrx2 Rabbit Polyclonal Antibody

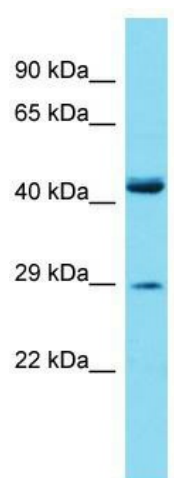
Product data:

Product Type:	Primary Antibodies
Applications:	WB
Recommended Dilution:	WB
Reactivity:	Mouse
Host:	Rabbit
Isotype:	IgG
Clonality:	Polyclonal
Immunogen:	The immunogen for Anti-Prrx2 Antibody is: synthetic peptide directed towards the middle region of Mouse Prrx2. Synthetic peptide located within the following region: AKFRRNERAMLATRSASLLKSYGQEAIEQPVAPRPTTMSPDYLSWPASS
Formulation:	Liquid. Purified antibody supplied in 1x PBS buffer with 0.09% (w/v) sodium azide and 2% sucrose. <i>Note that this product is shipped as lyophilized powder to China customers.</i>
Conjugation:	Unconjugated
Storage:	Store at -20°C as received.
Stability:	Stable for 12 months from date of receipt.
Predicted Protein Size:	26 kDa
Gene Name:	paired related homeobox 2
Database Link:	NP_033142 Entrez Gene 20204 Mouse Q06348
Background:	The function of this protein remains unknown.
Synonyms:	MGC19843; PMX2; PRX-2; PRX2
Note:	Immunogen sequence homology: Dog: 100%; Human: 100%; Pig: 93%; Rat: 93%; Horse: 93%; Bovine: 93%; Rabbit: 93%; Guinea pig: 92%; Mouse: 86%



[View online »](#)

Product images:



Host: Rabbit; Target Name: Prrx2; Sample Tissue: Mouse Small Intestine lysates; Antibody Dilution: 1.0ug/ml